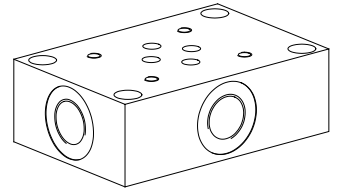


Threaded subplate

- Threaded connection G3/8"
- $p_{max} = 350$ bar

NG6
ISO 4401-03


DESCRIPTION

Threaded subplate with interface for valve NG6 to ISO 4401-03. The threaded subplates are made from phosphated steel.

TYPE CODE

	A	G	6	#	□
Interface					
Threaded subplate					
Nominal size 6					
Type list					
Connections P, T, A, B, on the side	S				
Connections P, T, A, B on the bottom	U				
Connections A, B, side; P, T, bottom	SU				
Design-Index (Subject to change)					

GENERAL CHARACTERISTICS

Designation	Threaded subplate
Nominal size	NG6 to ISO 4401-03
Fastening	4 location holes for cylinder screw M5
Connection	Threaded connections A, B, P, T G3/8"
Mounting position	any
Weight: AG6S	m = 1,0 kg
AG6U	m = 1,0 kg
AG6SU	m = 1,4 kg

HYDRAULIC SPECIFICATIONS

Working pressure	$p_{max} = 350$ bar
------------------	---------------------

TYPES

AG6S



AG6U

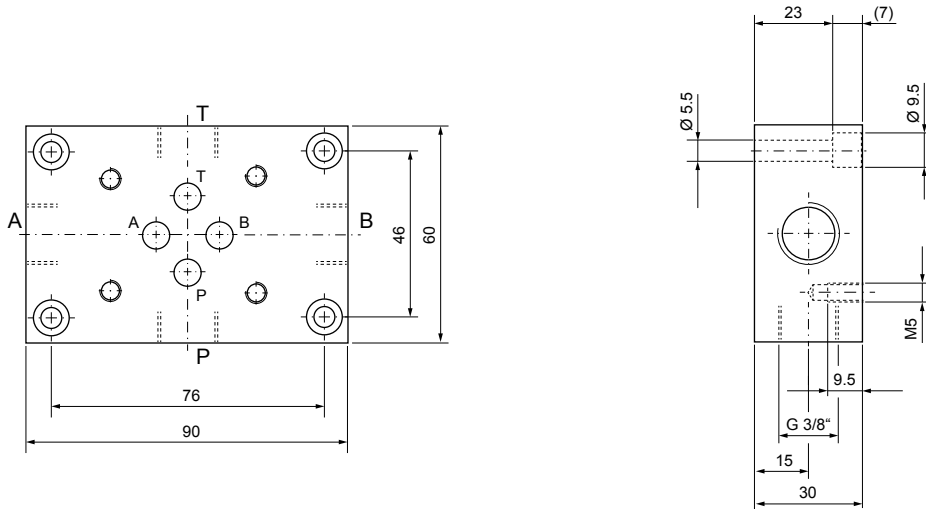


AG6SU

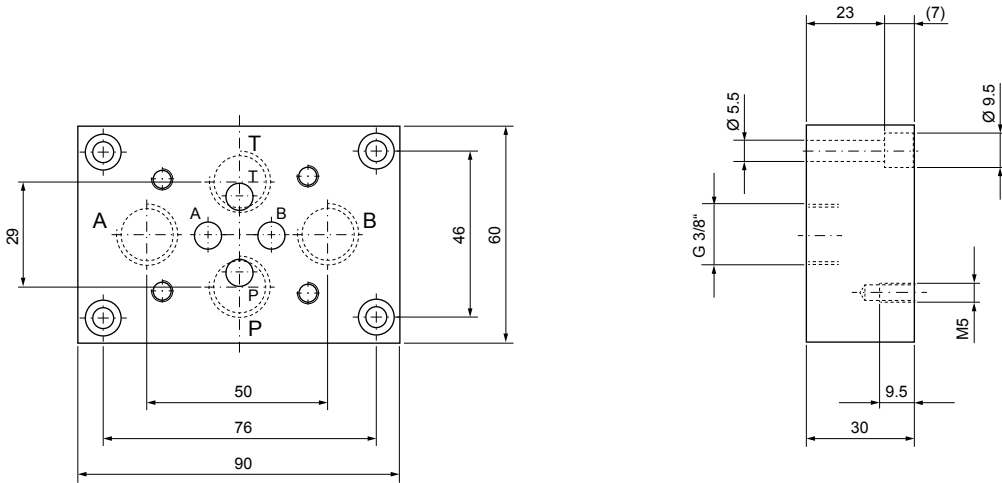


DIMENSIONS

AG6S



AG6U



AG6SU

