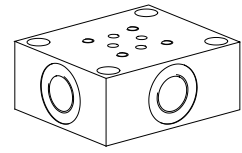


Threaded subplate

- Threaded connection G3/8"
- $p_{max} = 350 \text{ bar}$

NG4
ISO 4401-02


DESCRIPTION

Threaded subplate with interface for valve NG4 acc. to ISO 4401-02. The threaded subplate is made from phosphated steel.

TYPE CODE

	AG	<input type="checkbox"/>	B04	#	<input type="checkbox"/>
Threaded subplate					
Type list					
Connections P, T, A, B, on the side	S				
Connections P, T, A, B, on the bottom	U				
Connections A, B, side; P, T, bottom	T				
International standard interface ISO, NG4					
Design-Index (Subject to change)					

GENERAL CHARACTERISTICS

Designation	Threaded subplate
Nominal size	NG4 acc. to ISO 4401-02
Fastening:	4 location holes for cylinder screw M5
Connection	Threaded connections A, B, P, T G3/8"
Mounting position	any
Weight	m = 0,8 kg

HYDRAULIC SPECIFICATIONS

Working pressure	$p_{max} = 350 \text{ bar}$
------------------	-----------------------------

TYPES

AGSB04



AGUB04

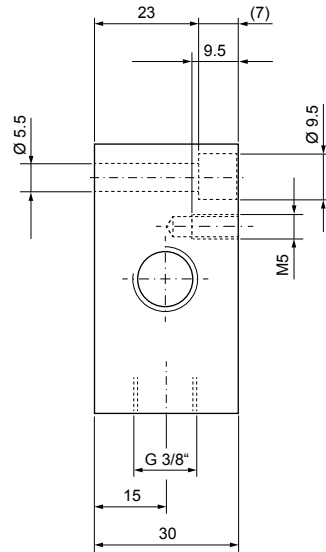
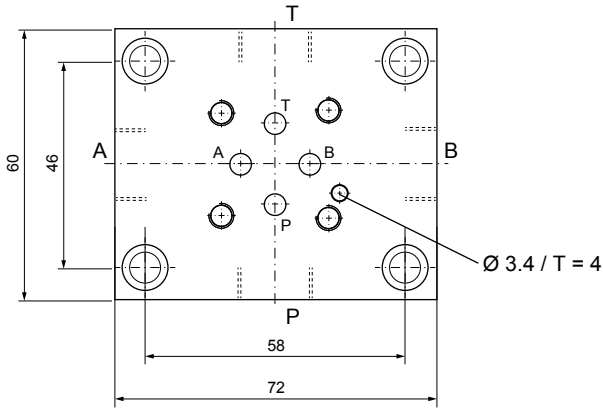


AGTB04

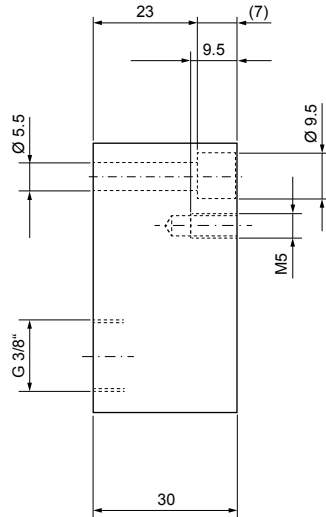
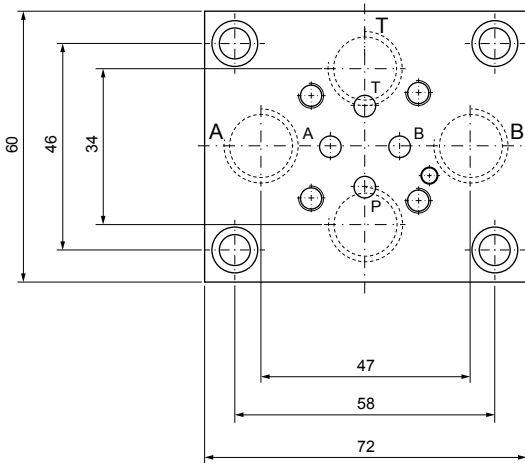


DIMENSIONS

AGSB04



AGUB04



AGTB04

