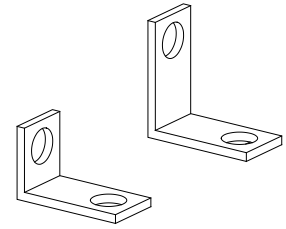
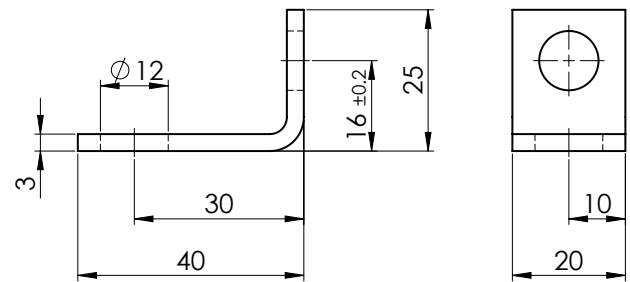
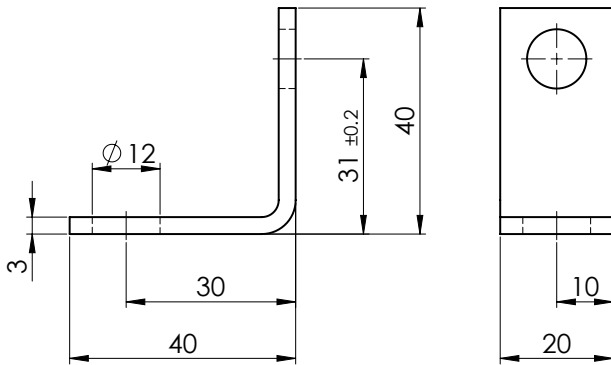
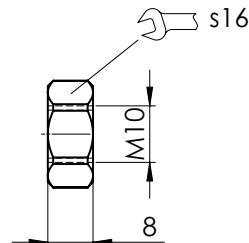
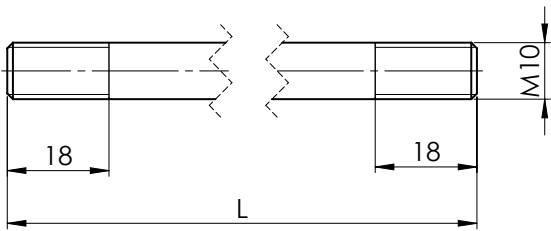


Fixation for module type many fold

- Fixing brakets
- Fixing screws

NG6

FIXING BRAKET
AB61 zinc-nickel coated
Article No. 171.1001
AB62 zinc-nickel coated
Article No. 171.1000


For mounting a complete assembly 4 fixing brakets are required.
 2 each AB61 and AB62

FIXING SCREWS
Stud
Nut zinc coated
Article No. 153.1501
Fastening torque
 46 Nm


Number	Description and dimension (M10xL)	Article No.
1 block	Stud M10x76 K8	224.5007
2 blocks	Stud M10x134 K8	224.5056
3 blocks	Stud M10x188 K8	224.5055
4 blocks	Stud M10x242 K8	224.5057
5 blocks	Stud M10x296 K8	224.5058
6 blocks	Stud M10x350 K8	224.5059
7 blocks	Stud M10x404 K8	224.5060
8 blocks	Stud M10x458 K8	224.5061

Material: Stainless steel 1.4057