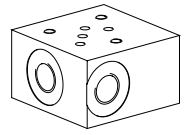


Threaded subplate

- Threaded connection G1/4"
- $p_{max} = 350$ bar

NG4-Mini[®]

DESCRIPTION

Threaded subplate with interface for valve NG4-Mini acc. to Wandfluh standard. The threaded subplate is made from phosphated steel.

TYPE CODE

	B	G	4	□	#	□
Interface						
Threaded subplate						
Nominal size 4-Mini						
Type list						
Connections P, T, A, B, on the side	S					
Connections P, T, A, B on the bottom	U					
Connections A, B, side; P, T, bottom	SU					
Design-Index (Subject to change)						

GENERAL CHARACTERISTICS

Designation	Threaded subplate	
Nominal size	NG4-Mini acc. to Wandfluh standard	
Fastening:		
BG4S	3 tapped holes for cylinder screw M5	
BG4U	2 location holes for cylinder screw M5	
BG4SU	2 tapped holes for cylinder screw M5	
Connection	Threaded connections A, B, P, T G1/4"	
Mounting position	any	
Weight:	BG4S	m = 0,5 kg
	BG4U	m = 0,75 kg
	BG4SU	m = 0,5 kg

HYDRAULIC SPECIFICATIONS

Working pressure	$p_{max} = 350$ bar
------------------	---------------------

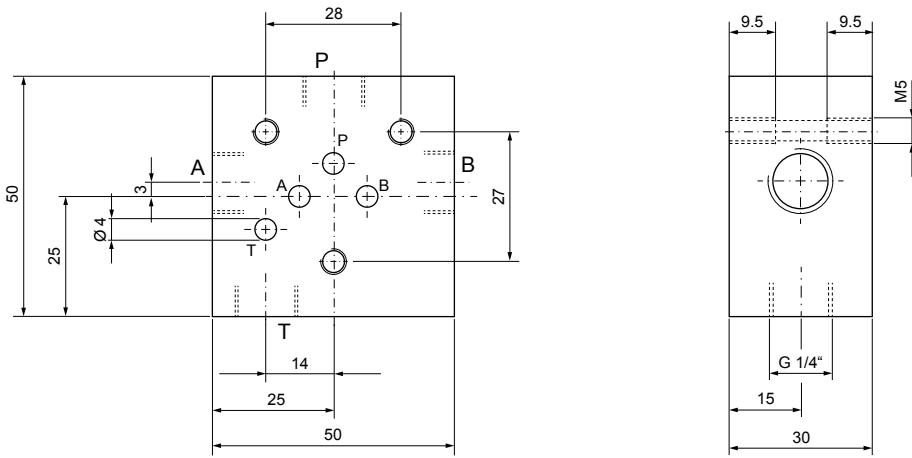
TYPES
BG4S

BG4U

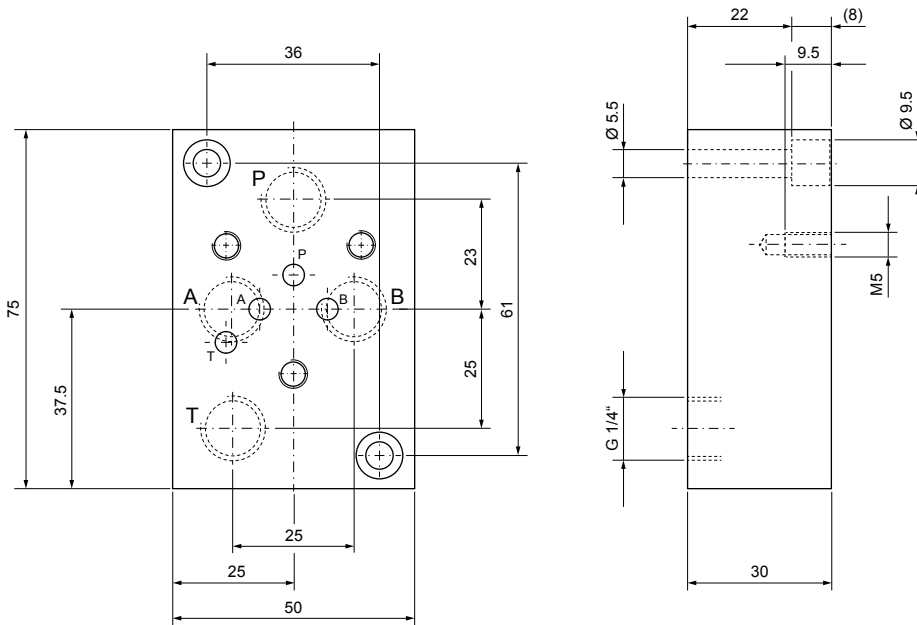
BG4SU


DIMENSIONS

BG4S



BG4U



BG4SU

