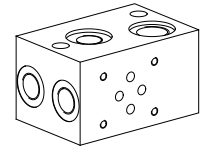


Module type manifold blocks

 • $p_{max} = 350 \text{ bar}$
NG6
 ISO 4401-03

DESCRIPTION

Module type manifold blocks with interface NG6 acc. to ISO 4401-03. Using an adapter plate and connecting blocks, combinations with NG3-Mini, NG4-Mini and NG10 are also possible (see also data sheet 2.9-80). The module type manifold blocks are made from steel and are phosphated.

FUNCTION

The module type manifold blocks are available with 3 different basic circuits, namely parallel, serial and pressure reduction circuit.

APPLICATION

This block system can be used as a replacement for expensive special blocks. Existing systems may be extended or reduced by adding as removing modular blocks.

TYPE CODE

	A	LV	6	<input type="checkbox"/>	#	<input type="checkbox"/>
International standard interface ISO	_____					
Module type manifold	_____					
Nominal size 6	_____					
Type list	_____					
Parallel circuit	<input type="checkbox"/> P					
Serial circuit	<input type="checkbox"/> S					
Pressure reduction circuit	<input type="checkbox"/> D					
Design-Index (Subject to change)	_____					

GENERAL SPECIFICATIONS

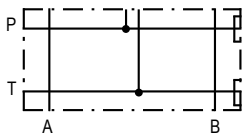
Description Parallel-, serial- and pressure reduction circuit
 Nominal size NG6 acc. to ISO 4401-03
 Fastening see data sheet 2.9-124
 Connection Threaded connections
 P, P_{red}, T1, A, B = G3/8"
 T = G1/2"
 Mounting position any
 Weight: m = 2,0 kg

HYDRAULIC SPECIFICATIONS

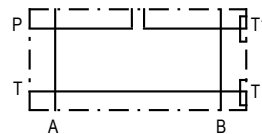
Working pressure $p_{max} = 350 \text{ bar}$

SYMBOLS

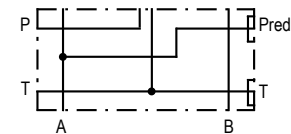
Block for parallel circuit
 ALV6P



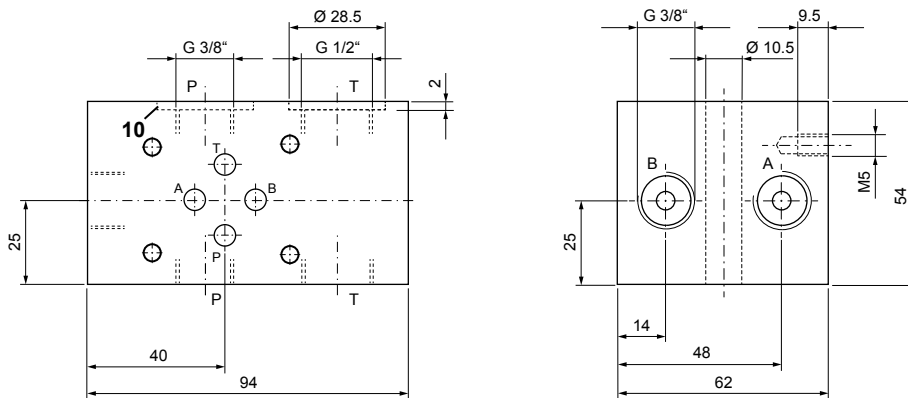
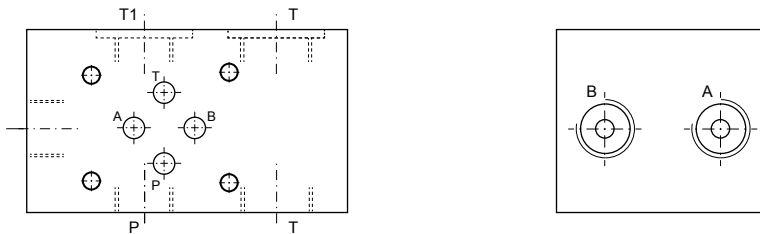
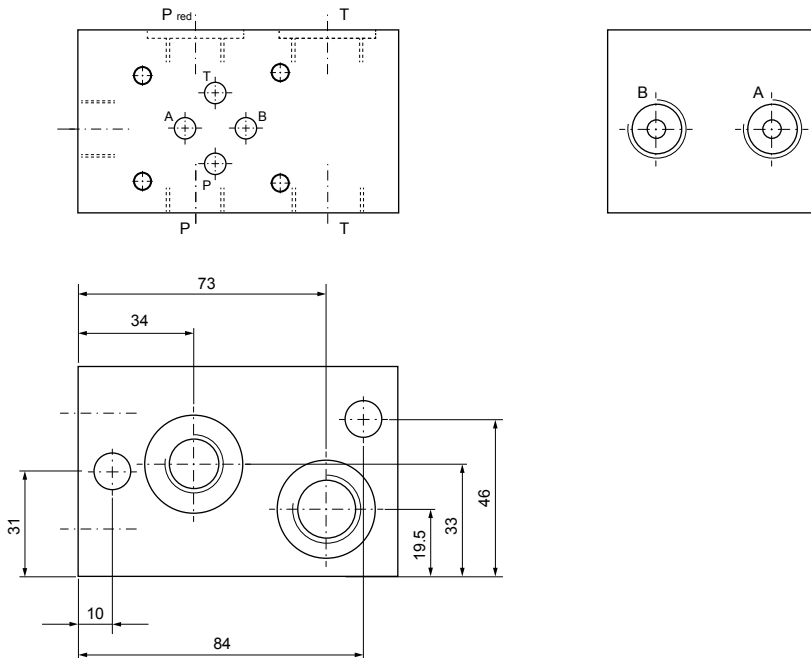
Block for serial circuit
 ALV6S



Block for pressure reduction circuit
 ALV6D



DIMENSIONS

 Block for parallel circuit
 ALV6P

 Block for serial circuit
 ALV6S

 Block for pressure reduction circuit
 ALV6D

PARTS LIST

Position	Article	Description
10	160.2238	O-ring ID 23,81x2,62

ACCESSORIES

 Fixing brackets AB61/AB62 and studs
 see data sheet 2.9-124