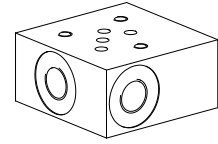


**Threaded subplate**

- Threaded connection G1/8"
- $p_{max} = 350$  bar

**NG3-Mini<sup>®</sup>**

**DESCRIPTION**

Threaded subplate with interface for valve NG3-Mini acc. to Wandfluh standard. The threaded subplate is made from phosphated steel.

**TYPE CODE**

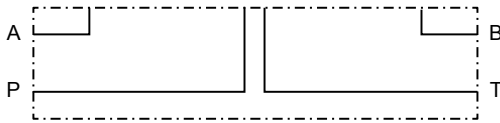
	B	G	3	S	#	<input type="checkbox"/>
Mounting interface acc. to Wandfluh standard						
Threaded subplate						
Nominal size 3-Mini						
Type list						
Connections P, T, A, B on the side						
Design-Index (Subject to change)						

**GENERAL CHARACTERISTICS**

Designation	Threaded subplate
Nominal size	NG3-Mini acc. to Wandfluh standard
Fastening	3 tapped holes for cylinder screw M4
Connection	Threaded connections A, B, P, T G1/8"
Mounting position	any
Weight	m = 0,2 kg

**HYDRAULIC SPECIFICATIONS**

Working pressure	$p_{max} = 350$ bar
------------------	---------------------

**SYMBOL**

**DIMENSIONS**
