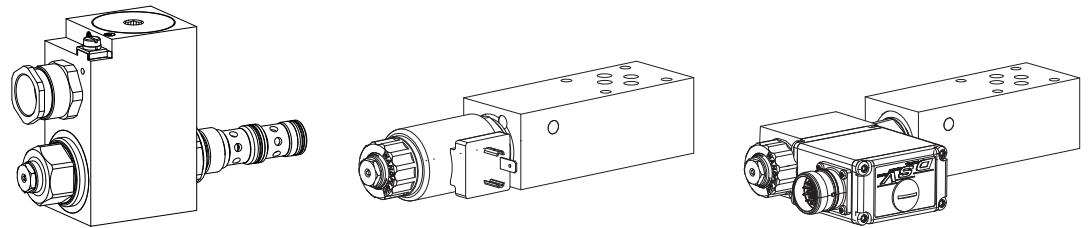


Proportional 3-way flow control valve
Flange- and sandwich construction
 • Direct operated, pressure compensated
 • $p_{max} = 350 \text{ bar}$

NG6
ISO 4401-03



DESCRIPTION

Direct operated, pressure compensated proportional flow control valve in flange- and sandwich construction. Proportional flow control screw-in cartridges M22x1,5 acc. to ISO 7789 are installed. The flange body is painted, the sandwich plates are phosphatised.

FUNCTION

The 3-way flow control valve is designed to keep the oil flow to any actuator constant irrespective of the load.

APPLICATION

Proportional 3-way flow control valves are used where the supply volume flow has to be kept constant even when the load fluctuates. Depending on the application, a distinction is made between restricting the forward flow or the return flow.

TYPE CODE

Flow control valve	Q	D	<input type="checkbox"/>	<input type="checkbox"/>	A06 -	<input type="checkbox"/>	-	<input type="checkbox"/>	#	<input type="checkbox"/>
3-way										
Proportional	<input type="checkbox"/>									
Proportional Explosion protection	<input type="checkbox"/>									
Flange construction	<input type="checkbox"/>									
Sandwich construction	<input type="checkbox"/>									
International mounting interface ISO, NG6										
Type list / Function										
Flange construction	Sandwich construction									
A → B	<input type="checkbox"/>									
in P	<input type="checkbox"/>									
Nominal volume flow level, nominal voltage, etc. of the built-in screw-in cartridge										
Examples:	QDPFA06 - A/B - <input type="checkbox"/> 16 - G12/WD - HB4,5									
	QDPSA06 - P - <input type="checkbox"/> 25 - G24/MEA-1									
Design-Index (Subject to change)										

GENERAL SPECIFICATIONS

Description	Proportional 3-way flow control valve
Nominal size	NG6 acc. to ISO 4401-03
Construction	Flange- and sandwich construction
Operations	Proportional solenoid
Mounting	4 holes for socket cap screws M5 or studs screws M5
Connection	Threaded connection plates Multi-flange subplate Longitudinal stacking system
Weight (without screw-in cartridge)	• Flange type $m = 1,10 \text{ kg}$ • Sandwich type $m = 1,30 \text{ kg}$

SCREW-IN CARTRIDGES INSTALLED

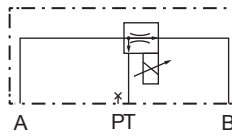
The following screw-in cartridges are used in either the flange body or the sandwich body:

Typ	Bezeichnung	Datenblatt Nr.	Qmax*
QDPPM22	3-way-construction	2.6-644	40 l/min
QDPPM22-../ME	3-way-construction, with integrated electronics	2.6-647	40 l/min
QDBPM22	3-way-construction, Explosion protection	2.6-648	40 l/min

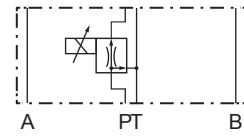
* Can deviate from the values on the data sheets of the screw-in cartridges.

TYPE CHARTS

QD.FA06-A/B



QD.SA06-P


REMARK!

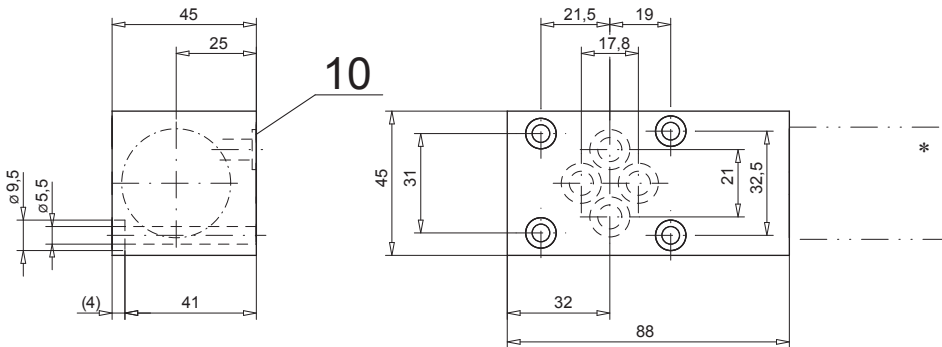
Detailed performance data and additional hydraulic and electric specifications may be drawn from the data sheets of the corresponding installed screw-in cartridge.


REMARK!

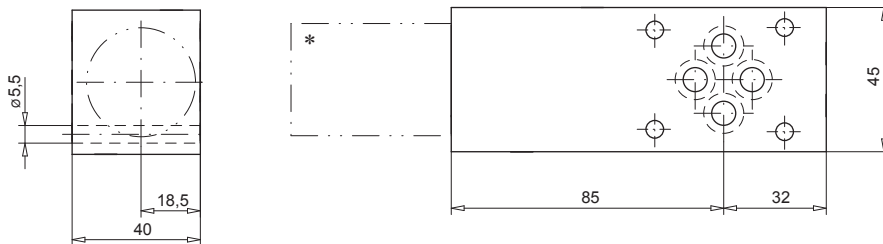
Detailed performance data and additional hydraulic and electric specifications may be drawn from the data sheets of the corresponding installed screw-in cartridge.

DIMENSIONS

Flange construction QD.FA06-A/B



Sandwich construction QDPSA06-P


PARTS LIST

Position	Article	Description
10	160.2093	O-ring ID 9,25x1,78

ACCESSORIES

Proportional amplifier

register 1.13

Technical explanation see data sheet 1.0-100