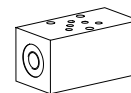


**Threaded ports sandwich body**

 •  $p_{max} = 350 \text{ bar}$ 
**NG3-Mini<sup>®</sup>**

**DESCRIPTION**

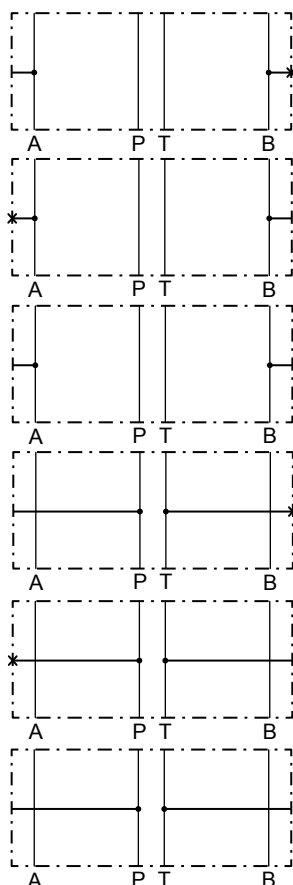
Sandwich bodies NG3-Mini acc. to Wandfluh standard with ports G1/8" for external connection to A and B or P and T lines. Sandwich bodies with one external connection (A, B, P, T) will have the second port plugged with plug G1/8" (article 238.1405). The sandwich bodies are zinc coated and will be supplied inclusive 5 O-rings ID 4,50x1,50 (article 160.2045). The connections T and To are not connected together.

**APPLICATION**

Threaded ports sandwich bodies in stacking systems to connect gauges, sensors or control elements.

**TYPE CODE**

	PG	S	A03		#	
Sandwich threaded body						
Sandwich construction						
Mounting interface acc. to Wandfluh standard, NG3-Mini						
Type list / Function						
	in A	<b>A</b>	in P	<b>P</b>		
	in B	<b>B</b>	in T	<b>T</b>		
	in A and B	<b>AB</b>	in P and T	<b>PT</b>		
Design-Index (Subject to change)						

**TYPES**

 PGSA03-A  
 (article 203.0501)

 PGSA03-B  
 (article 203.0502)

 PGSA03-AB  
 (article 203.0500)

 PGSA03-P  
 (article 203.0504)

 PGSA03-T  
 (article 203.0505)

 PGSA03-PT  
 (article 203.0503)

**DIMENSIONS**
