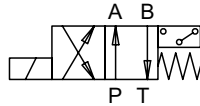


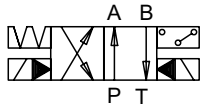
Solenoid operated spool valves with mechanical position monitoring
Types / Symbols

Mechanical switches are available on valve sizes NG6 and NG10.

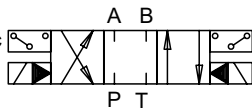
4/2-way spool valve



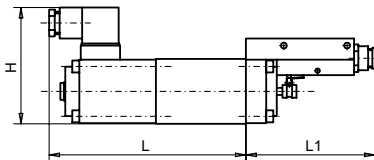
4/2-way impulse type spool valve with hydraulic pilot operation



4/3-way spool valve with hydraulic pilot operation


Design / Dimensions

4/2-way spool valve

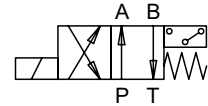

Ordering code example

AM4Z100a-S1468-G24

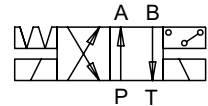
Solenoid operated spool valves with inductive position monitoring
Types / Symbols

Inductive switches are available on valve sizes NG3, NG4, NG6, NG10.

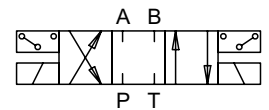
4/2-way spool valve



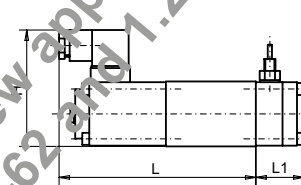
4/2-way impulse type spool valve



4/3-way spool valve


Design / Dimensions

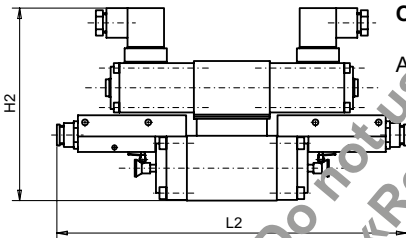
4/2-way spool valve


Ordering code example

 BM4Z40a-Z48-G24
 BM4Z40a-Z68-G24

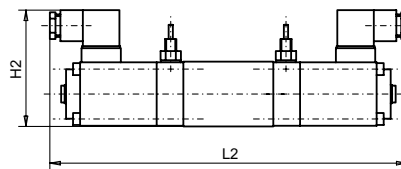
4/2-way spool valves are also available with proximity switch in solenoid housing. See poppet valve S1721/S2162 for dimensions.

4/2; 4/3-way spool valve hydraulic pilot operated


Ordering code example

ASP4D61-1-S1252-G24

4/2; 4/3-way spool valve


Ordering code example

 BM4D31-Z48-G24
 BM4D31-Z68-G24

Limit switch data S1468 / S1252

- in aluminium housing with PG9 cable entry
- normally closed
- Protection acc. to DIN 40050 IP40
- max. supply voltage 250 VAC
- max. load 10 A

Proximity switch data Z48 / Z68 / Z75 / Z80

- in intermediate flange, on top
- - Z48: NPN normally open (NO)
- - Z68: NPN normally closed (NC)
- - Z75: PNP normally closed (NC)
- - Z80: PNP normally open (NO)
- Protection acc. to DIN 40050 IP65/67
- Supply voltage 10...30 VDC
- Ripple ≤ 10%
- Load 150 mA
- short circuit protected

Dimensions:

	H	L	L1	B1	H2	L2	B2
NG6 S1468	84.5	138	92.5	46	-	-	-
NG10 S1468	100	178	101	62	-	-	-
NG6 S1252	-	-	-	-	136.5	249	46
NG10 S1252	-	-	-	-	135.5	261	78

 Pressure and flow rating, type codes etc.:
 see data sheets for valves without position indication.

Dimensions:

	H	L	L1	B1	H2	L2	B2
NG3	68.5	93	24.3	30	68.5	182	30
NG4 Medium	75.5	123.5	30	30	75.5	233	30
NG6	85	142	34.3	46	85	254	46
NG10	99	181.2	48.6	62	99	327.4	62

 Pressure and flow rating, type codes etc.:
 see data sheets for valves without position indication.