

Control knobs

- suitable for potentiometer
- available in various sizes

DESCRIPTION

The control knob is made of plastic. The size and design can be obtained from the drawing below. The suitable potentiometers are described in data sheet no. 1.13-535. (text written at side: on page 2)

FUNCTION

Displays, on request, the current potentiometer setting.

APPLICATION

Control knobs are used on potentiometers wherever the design is important and wherever the potentiometer setting has to be displayed visually.

CONTENT

TYPE CODE 1
 COLOURS 1
 DIMENSIONS 2
 ADDITIONAL INFORMATION 2

TYPE CODE

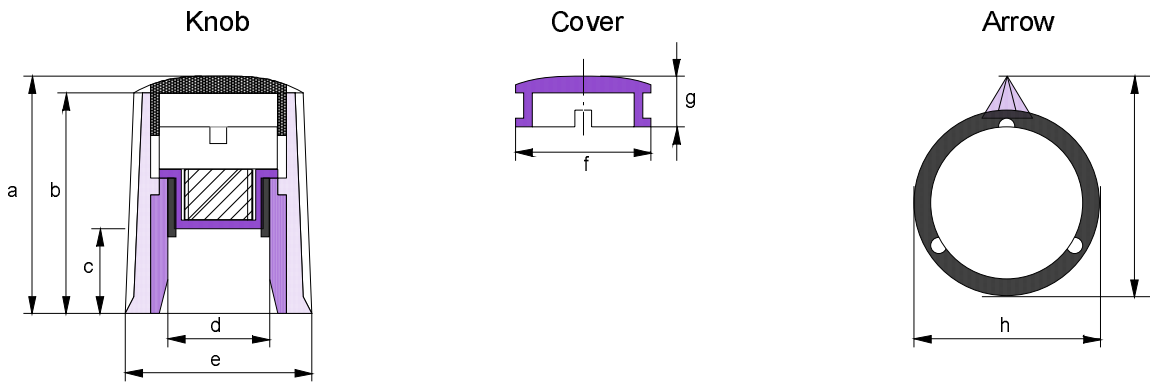
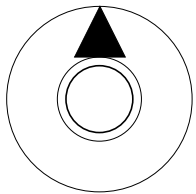
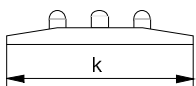
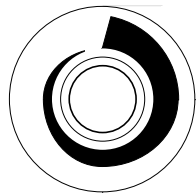
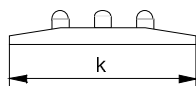
	Z	02	-	<input type="text"/>	-	<input type="text"/>	-	<input type="text"/>	#	<input type="text"/>
Accessory										
Control knobs										
Control knob diameter										
10 mm Ø										<input type="text" value="10"/>
14,5 mm Ø										<input type="text" value="14"/>
21 mm Ø										<input type="text" value="21"/>
Collet diameter										
3 mm Ø										
for WAG Pot Type A (for 10mm+14,5mm dia. only Ø)										<input type="text" value="03"/>
6 mm Ø										
for WAG Pot Types B+C (for 14,5mm+21mm dia only Ø)										<input type="text" value="06"/>
Control knob design										
with nut cover (for 10mm+14,5mm dia. only Ø)										<input type="text" value="01"/>
with arrow										<input type="text" value="02"/>
with arrow disc										<input type="text" value="03"/>
with diagram on disc (rotor+stator)										<input type="text" value="04"/>
Design-Index (Subject to change)										

Other designs or special productions available on request

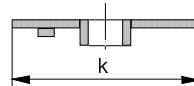
COLOURS

Knob	black
Cover	red
Nut cover	black
Arrow	red
Arrow disc	red with black arrow
Diagram on disc	rotor transparent with black print stator black with white display section

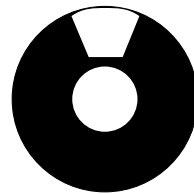
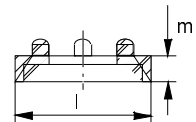
A cover is supplied with every control knob, all other components must be determined by means of type codes.

DIMENSIONS

Arrow disc

Diagram on disc


Rotor



Stator


Nut cover


Control knob Type	Weight in mm											
	a	b	c	d	e	f	g	h	i	k	l	m
Z02 - 10 - 03	14	13	5.2	3	10	7	3.3	10	12	20	15.5	3.5
Z02 - 14 - 03	17	16	5.2	3	14.5	10	4.8	14.5	16.7	26	18.7	3.5
Z02 - 14 - 06	17	16	7	6	14.5	10	4.8	14.5	16.7	26	18.7	3.5
Z02 - 21 - 06	18.5	17	10	6	21.3	15.7	5.4	21.3	24	36	-	-

ADDITIONAL INFORMATION

 Potentiometer
 Wandfluh Electronics, general

 1.13-535
 1.13