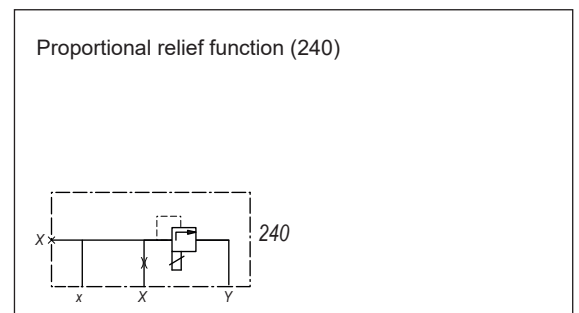
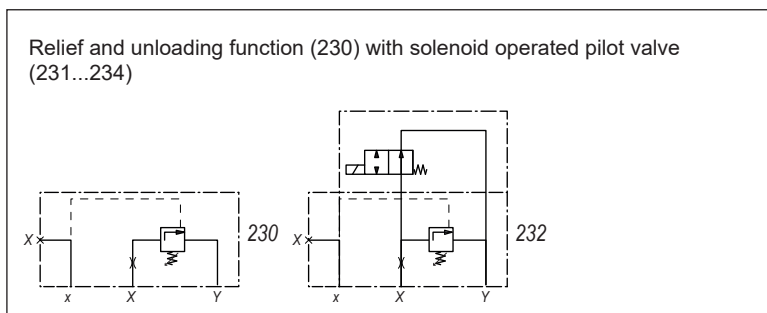
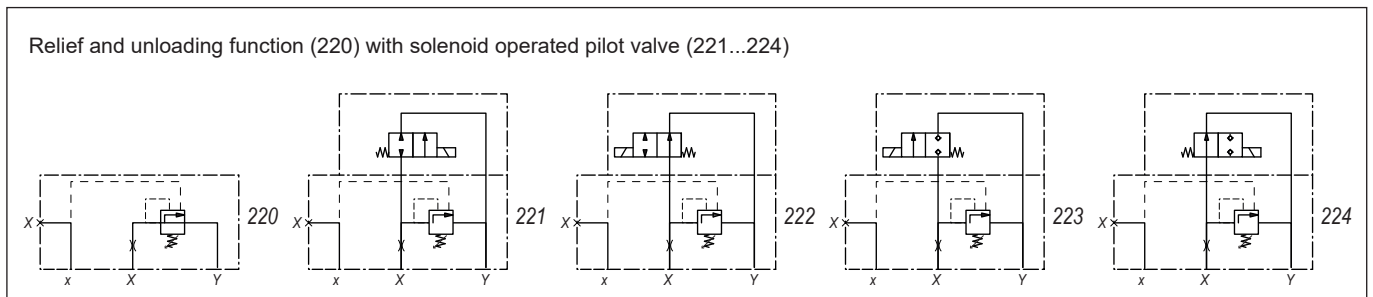
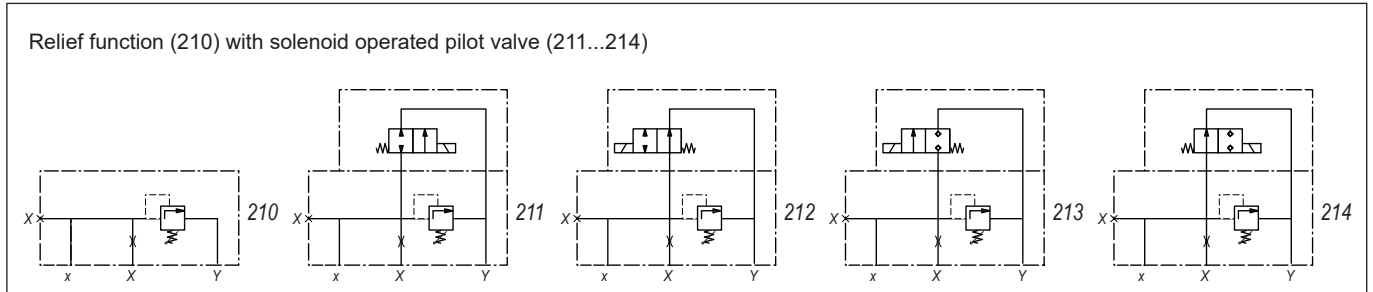


**Control cover
for pressure function**

 • $p_{max} = 350 \text{ bar}$
NG 25
 ISO 7368

TYPE CODE

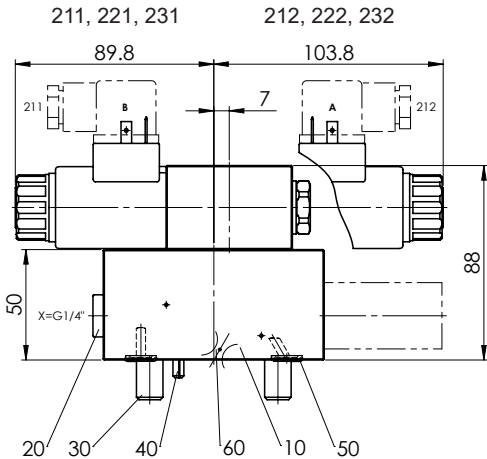
Control cover	D 25				<input type="checkbox"/>	-	<input type="checkbox"/>	/	<input type="checkbox"/>	-	<input type="checkbox"/>	#	<input type="checkbox"/>
Size 25	D 25												
Pilot no. 210...240	D 25												
Solenoid type for pilot valve													
Standard	211, 212, 221, 222, 231, 232	<input type="checkbox"/>	M	/	VD								
	213, 214, 223, 224, 233, 234	<input type="checkbox"/>	S										
	240	<input type="checkbox"/>	G	/	WD								
Nominal voltage U_N	12 VDC	<input type="checkbox"/>	G12	115 VAC	<input type="checkbox"/>	R115							
	24 VDC	<input type="checkbox"/>	G24	230 VAC	<input type="checkbox"/>	R230							
Orifice in cover	0.6 mm	<input type="checkbox"/>	0.6										
	1.0 mm	<input type="checkbox"/>	1.0	etc.									
Omit if without orifice													
Setting versions S, D, K, A (not applicable at cover 240) and press. range from press. valve					e.g.	<input type="checkbox"/>	D250						
Design-Index (Subject to change)													

GENERAL SPECIFICATIONS

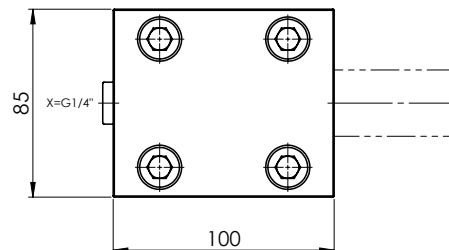
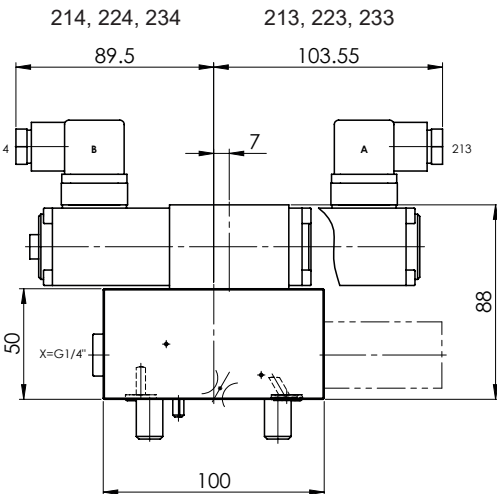
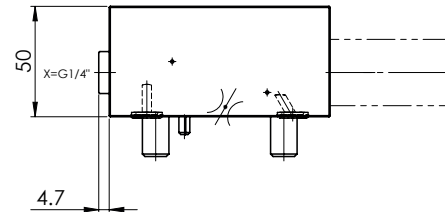
Construction	Control cover for directional function
Mounting position	any
Installation dimension	see dimension to ISO 7368
Ambient temperature	-20...+50 °C
Fastening torque	M _D = 80 Nm (Qual. 8.8) for fixing screws

HYDRAULIC SPECIFICATIONS

Fluid	Mineral oil, other fluid on request
Contamination efficiency	ISO 4406:1999, class 18/16/13 (Required filtration grade β ₆ ...10≥75) see data sheet no. 1.0-50/2
Viscosity range	12 mm ² /s to 320 mm ² /s
Fluid temperature	-20...+70 °C
Operation pressure	p _{max} = 350 bar

DIMENSIONS


210, 220, 230, 240


VALVES

Pilot operated valves:	211, 221, 231	WDMFA04-AB2	Data sheet 1.2-33
	212, 222, 232	WDMFA04-AB1	Data sheet 1.2-33
	213, 223, 233	BS22041a	Data sheet 1.11-2120
	214, 224, 234	BS22040b	Data sheet 1.11-2120
Pressure valves:	210...214	BA.PM22	Data sheet 2.1-540
	220...224	BY.PM22	Data sheet 2.1-544
	230...234	BX.PM22	Data sheet 2.1-544
	240	BDPPM22	Data sheet 2.3-540
Pressure ranges from press. valves:	210...214	63, 160, 315, 350 [bar]	
	220...224	100, 315 [bar]	
	230...234	100, 315 [bar]	
	240	40, 100, 200, 315 [bar]	

PARTS LIST

Position	Article	Description
10	063.1061	Plate to 210, 220, 230, 240
	063.1062	Plate to other types
20	238.2406	Locking screw VSTI G1/4"
30	246.6156	Cyl. screw M12x55 DIN912
40	221.2470	Pin Ø5x16 DIN1481
50	160.2092	O-ring ID 9,19x2,62
60	118.2051	Orifice M5 / 0,6 x 5
	118.2030	Orifice M5 / 0,7 x 5
	118.2032	Orifice M5 / 0,8 x 5
	118.2052	Orifice M5 / 0,9 x 5
	118.2031	Orifice M5 / 1,0 x 5