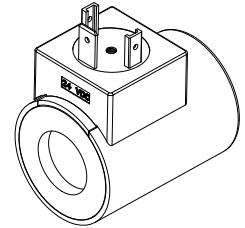


**Solenoid coil W.E37/16 x 40
 according to DIN VDE 0580
 Protection class IP 65/67/69K**

DESCRIPTION

The slip-on solenoid coil W.E37/16 x 40 is available in three different connection versions (see type code). The construction corresponds to the DIN VDE 0580-Norm. The housing is made of steel (nickel-/chromium coated), the connector socket is made of plastic material.

FUNCTION

With the combination of an armature tube the function of a switching solenoid or of a proportional solenoid results. The solenoid coils are available with standard nominal voltages and as AC and DC versions.

APPLICATION

The solenoid coils are mainly utilised in hydraulic applications.

TYPE CODE

Metal housing, round		W		<input type="checkbox"/>	E37 / 16 x 40 -	<input type="checkbox"/>	#	<input type="checkbox"/>
Connection execution								
Connector socket EN 175301-803/ISO 4400		<input type="checkbox"/>						
Connector socket AMP Junior-Timer		<input type="checkbox"/>						
Connector Deutsch DT04-2P		<input type="checkbox"/>						
Coil execution								
Internal coil diameter 16 mm								
Coil length 40 mm								
Nominal voltage U _N	12 VDC	<input type="checkbox"/>	G12	115 VAC	<input type="checkbox"/>	R115		
	24 VDC	<input type="checkbox"/>	G24	230 VAC	<input type="checkbox"/>	R230		
Design-Index (Subject to change)								

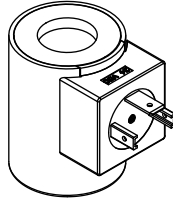
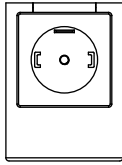
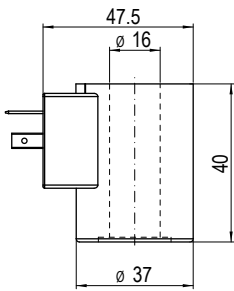
SPECIFICATIONS

Coil winding		12 VDC	24 VDC	115 VAC	230 VAC	
insulation class	H (180 °C)	Nominal power (W)	20,5	20,5	17	17
Relative duty factor	100% DF/ED	(Switching function)				
	combined with armature tube and valve	Limiting power (W)	14	14	–	–
Ambient temperature	-20...+50 °C	(Proportional function)				
Corrosion protection	Salt spray test according to EN ISO 9227: ≥ 200 h	Limiting current (50 °C) (A)	1,16	0,58	–	–
		(Proportional function)				
		Nominal resistance (Ω)	7	28	618	2500
		Number of windings (–)	710	1420	6 050	12 100
		Weight of solenoid coil (kg)	0,22	0,22	0,22	0,22

SAFE OPERATION

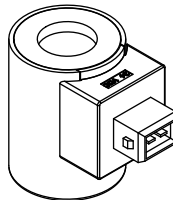
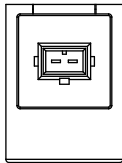
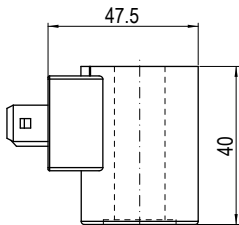
Caution: Because of the danger of over-heating the solenoid coil must only be commissioned together with an armature tube as well as with a valve.

TYPE LISTE / DIMENSIONS / GENERAL SPECIFICATIONS



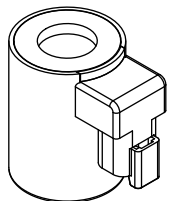
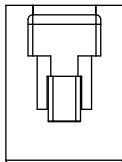
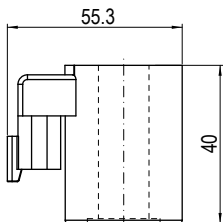
Execution: W **D** E37/16x40-...

- 3-poles 2 P+E
 - Protection class IP 65
- With corresponding mating connector
(not included in delivery)
and professional assembly.



Execution: W **J** E37/16x40-...

- 2-poles 2P
 - only for $U_N \leq 75$ VDC
 - Protection class IP 66
- With corresponding mating connector
(not included in delivery)
and professional assembly.



Execution: W **G** E37/16x40-...

- 2-poles 2P
 - only for $U_N \leq 75$ VDC
 - Protection class IP 67 and 69 K
- With corresponding mating connector
(not included in delivery)
and professional assembly.

Technical explanation see data sheet 1.1-400 and 1.1-410