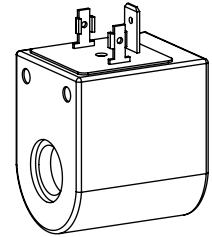


Solenoid coil K.E33 / 13 x 39
according to DIN VDE 0580
Protection class IP 65/67/69K

DESCRIPTION

The slip-on solenoid coil K.E33/13 x 39 is available in three different connection versions (see type code). The construction corresponds to the DIN VDE 0580-Norm. The housing and the connector socket is made of plastic material.

FUNCTION

With the combination of an armature tube the function of a switching solenoid results. The solenoid coils are available with standard nominal voltages and as DC versions.

APPLICATION

The solenoid coils are mainly utilised in hydraulic applications.

TYPE CODE

Plastic housing		K		<input type="checkbox"/>	E33 / 13 x 39 -	<input type="checkbox"/>	#	<input type="checkbox"/>
Connection execution								
Connector socket EN 175301-803/ISO 4400		<input type="checkbox"/>						
Connector socket AMP Junior-Timer		<input type="checkbox"/>						
Connector Deutsch DT04-2P		<input type="checkbox"/>						
Coil execution								
Internal coil diameter 13 mm								
Coil length 39 mm								
Nominal voltage U _N		12 VDC	<input type="checkbox"/>					
		24 VDC	<input type="checkbox"/>					
Design-Index (Subject to change)								

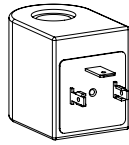
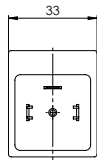
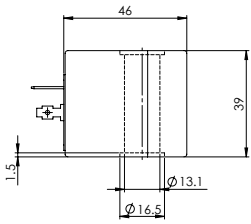
SPECIFICATIONS

Coil winding		12VDC	24VDC
insulation class	H (180 °C)	Nominal power (W)	20
Relative duty factor	100% DF/ED	(Switching function)	20
	combined with armature tube and valve	Nominal resistance (Ω)	7
Ambient temperature	-30...+60 °C	Weight of solenoid coil (kg)	0,19
Corrosion protection	Plastic coated		
	Black		

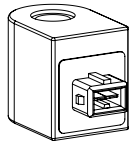
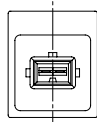
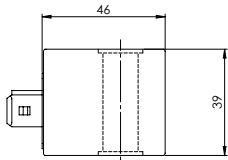
SAFE OPERATION

Caution: Because of the danger of over-heating the solenoid coil must only be commissioned together with an armature tube as well as with a valve.

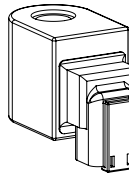
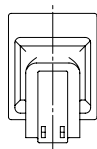
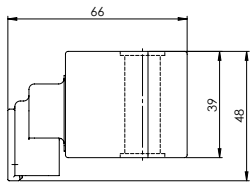
TYPE LISTE / DIMENSIONS / GENERAL SPECIFICATIONS



- Execution: K **D** E33/13x39-...
- 3-poles 2 P+E
 - Protection class IP 65
- With corresponding mating connector (not included in delivery) and professional assembly.



- Execution: K **J** E33/13x39-...
- 2-poles 2P
 - only for $U_N \leq 75$ VDC
 - Protection class IP 66
- With corresponding mating connector (not included in delivery) and professional assembly.



- Execution: K **G** E33/13x39-...
- 2-poles 2P
 - only for $U_N \leq 75$ VDC
 - Protection class IP 67 and 69 K
- With corresponding mating connector (not included in delivery) and professional assembly.

Technical explanation see data sheet 1.1-400 and 1.1-410