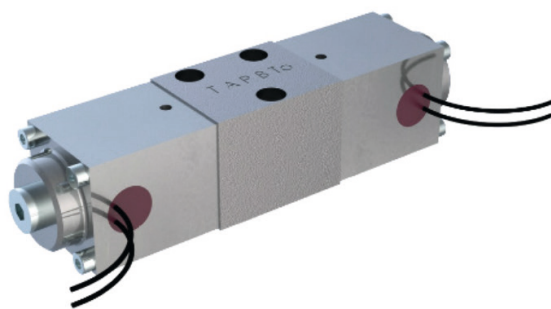


COMPONENTS

Large range of hydraulic control valves with interchangeable functions, allowing you to have the choice between on/off and proportional style valves for your requirements. Strong performance vs size and weight from our NG3-mini range brings advantages to reduced weight and real estate requirements for an ROV. Manual control valves are offered in stainless steel, meaning they can be housed externally and accessed easily by operators for setup. Valve electronics are pressure tolerant and housed within valve pack builds, ensuring full functionality of valve is achieved via correct control signal.



FOCUS

Bespoke solutions to deliver on the most challenging of space requirements. Wandfluh offer a totally unique design process, working closely with clients to deliver the best solution for vehicle layout and demand. Strong focus on reduction of weight and real estate requirements, meaning valuable space is available for other components such as tooling. Innovations of designs are based around the client's needs, therefore positioning of ports and valves can be tailored to suit requirements for installation, operation and service.

APPLICATION ROV

Remotely operated vehicles (ROV) are used for a number of subsea operations, from observation to work-class ROV's providing deepwater intervention at depths of up to 6000m in hostile and challenging environments. Reliability is key to an ROV, and Wandfluh has built up their reputation over the decades of being a market leader for control valves used on ROV's and subsea vehicles through high quality Swiss product, innovation and unparalleled support and service. Flexibility in design and different components mean that you can trust Wandfluh to offer the best solution for your needs.

SPECIALITIES

- Miniature valves offering the smallest space envelope required for hydraulic functions.
- Range of solenoid terminations available, allowing for considerations of maintenance and visual feedback.
- Customised and bespoke valve pack assemblies to suit layout requirements and efficiencies in performance vs weight.
- Integrated electronics housed within valve pack build which reduces external components and cable whips required.

