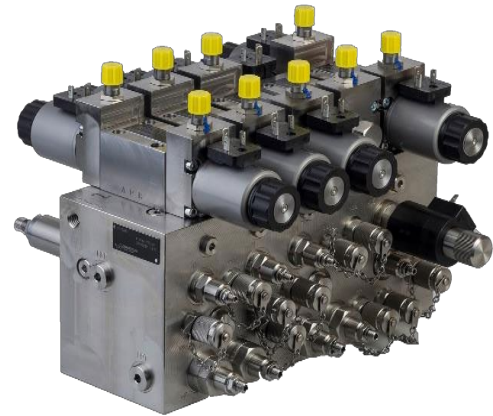


CETOP CONTROL UNITS

THE PROVEN HYDRAULIC SOLUTION

Operating pressure	Up to 350 bar
Flow rate	Up to 3000 l/min
Nominal sizes	NG3-Mini, NG4-Mini, NG4, NG6 and NG10
Block construction with aluminium	up to 200 bar
Block construction with steel	from 200 bar
Completely or partially made of acid-resistant steel	
Explosion protected solutions	
Solutions for HFC and other special fluids	



Control unit with switching position monitoring

FIELD OF APPLICATION

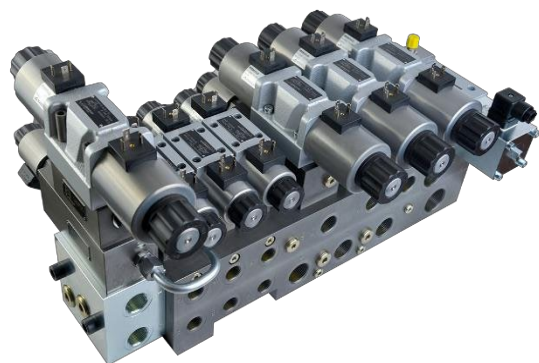
The CETOP control unit is the ideal choice for industrial applications, prototypes or small series. Due to the standardised interface, optimisations or additions can be carried out flexibly and easily. In addition, there is an extensive catalogue of standard and special valves to choose from. Combined with screw-in cartridges, the control unit is the most effective and most efficient solution in many applications. The function of the control unit is actively monitored through the use of switching position-monitored valves.



Industrial applications

DESCRIPTION

Decisively influenced by the customer's specifications, a specific solution is developed. The planned number of units, pressure, volume flow and extension requests strongly influence the proposed solution, which is why the solution is found in close cooperation with the customer. Ideally, the control unit can be used for several construction sizes.



Customer-specific control units



CONTROLLER SOLUTIONS



Powerful electronic solutions

PERFORMANCE FEATURES



Production of control units



Compact amplifier electronics for explosion protection

FEATURES

- Exceptionally high flexibility and high availability through the production of valve and block solutions in-house.
- High quality level combined with a good price-performance ratio.
- Made in Switzerland



Wandfluh AG | Division Systems | Helkenstrasse 13 | CH-3714 Frutigen

Tel. +41 33 672 72 52 | Fax +41 33 672 72 87 | sales-ch@wandfluh.com | www.wandfluh.com