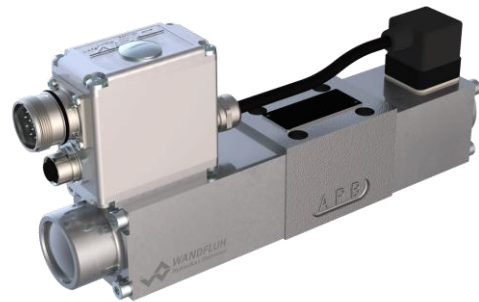


PROPORTIONAL SPOOL VALVES WITH INTEGRATED SPOOL POSITION CONTROL **BRW_24 & WDRFA06_24**

PROPORTIONAL SPOOL VALVE WITH INTEGRATED SPOOL POSITION CONTROL (LVDT)

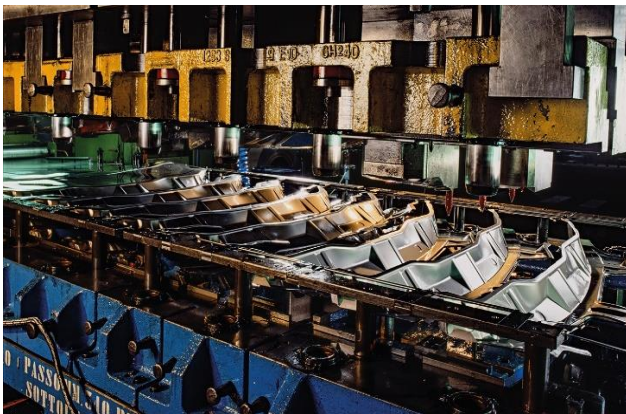
Direct operated	BRW_24 WDRFA06_24
Q_{max}	40 l/min
$Q_{N max}$	32 l/min
p_{max}	350 bar
Type of protection	IP67



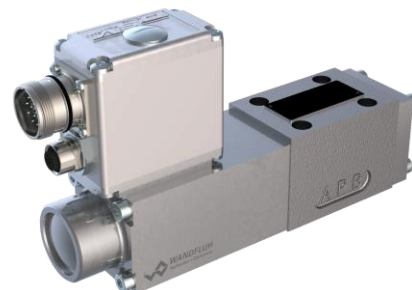
4/3-way spool valve WDRFA06_24

DESCRIPTION

Direct operated proportional spool valve with 4 connections in a 5-chamber system. With the integrated spool position sensor (LVDT), the actual position of the spool is continuously recorded and made to follow the transmitted command value. By means of this internal position control, a minimum hysteresis and excellent dynamic characteristics are assured. The Plug & Play valves are factory set and therefore have the lowest serial variation.



Application example hydraulic press



4/3-way spool valve WDRFA06_ACB1_24

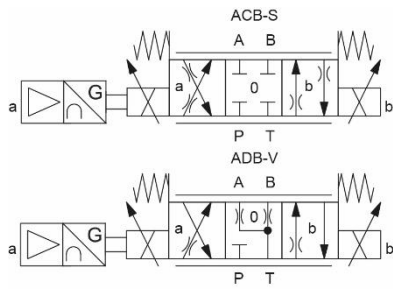
FIELDS OF APPLICATION

The applications are in the industrial as well as in the mobile hydraulics for the smooth control of hydraulic actuations.



SYMBOL

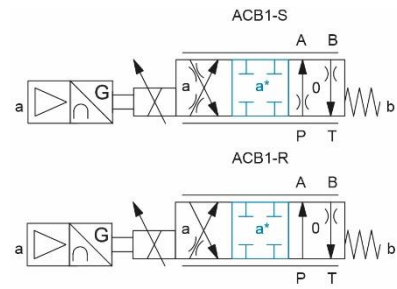
The following options are available for valves BRW_24 and WDRFA06_24



The two different spool types

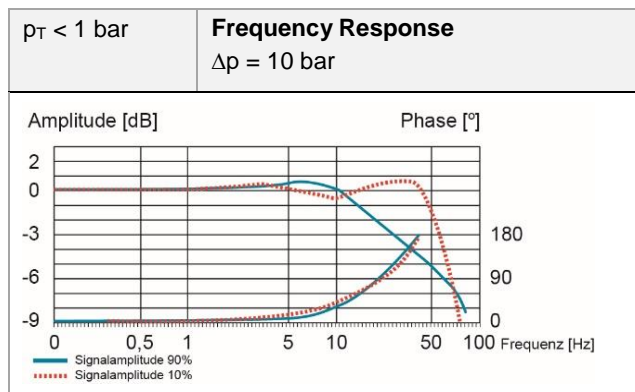
SYMBOL

The following options are available for the valve WDRFA06-ACB1_24



The middle position (a*) is reached when the solenoid is only switched with 50 % power

PERFORMANCE CHARACTERISTIC



Tank pressure (p_T) should be below 1 bar

ELECTRONICS

For the control of proportional spool valves, electronic modules in different executions are available. Regardless of the design, the modules can be programmed using the free parameterisation software PASO.



Amplifier and controller electronics

