

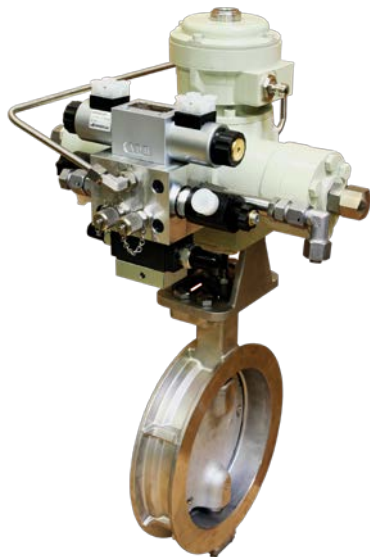
POPPET VALVE DETENTED **A_3206rr / AExd3206rr**

POPPET VALVE DETENTED FLANGE CONSTRUCTION

Direct operated	NG6 detented
Q _{max}	40 l/min
p _{max}	350 bar

DESCRIPTION

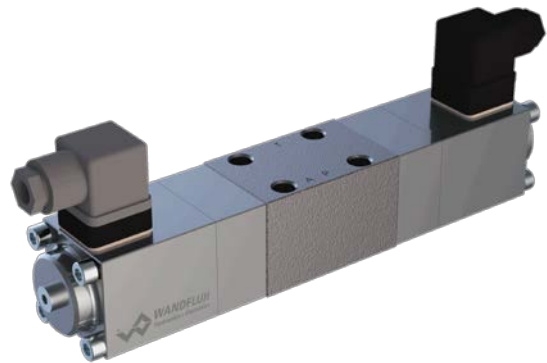
Direct operated 3/2-way solenoid poppet valve in flange construction. By means of the pressure tight switching solenoid, the poppet valve spool is opened or closed acting against the spring and is held in the switching position by the form-closed detent. Due to the poppet spool construction with pressure compensation on both sides, the flow through the valve is possible in both directions. The metallic sealing seat closes the valve leakage-free. In the Ex-version, the pressure tight encapsulated Ex-protection solenoid coil prevents an explosion on the inside penetrating to the outside as well as an ignitable surface temperature.



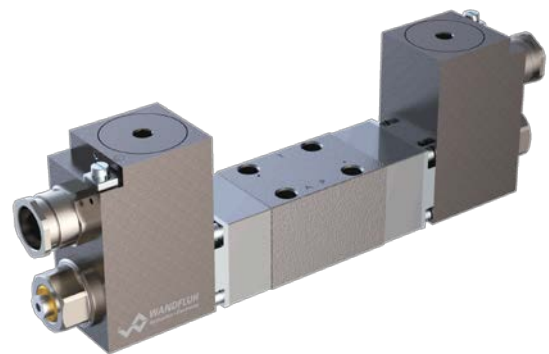
Actuator from Pleiger, controlled by a Wandfluh valve

APPLICATION

These valves are suitable for applications in explosion or non-explosion hazard areas. Poppet valves are used where tight closing functions of the valve are essential like leakage-free load holding, clamping or gripping.



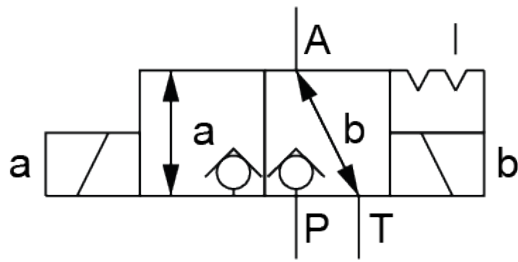
A_3206rr, leakage-free and detented valve



AExd3206rr, Ex-proof, leakage-free and detented valve



SYMBOL



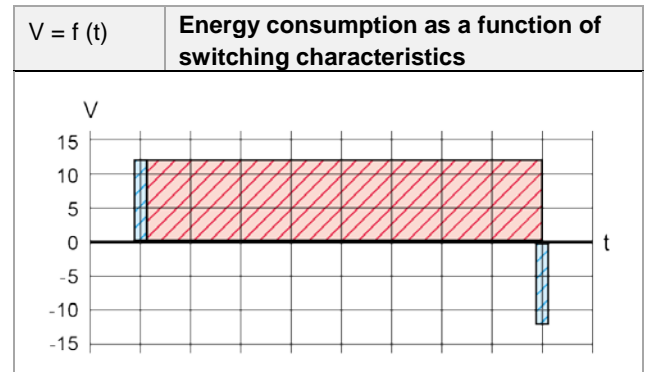
Symbol of A_3206rr / AExd3206rr

CERTIFICATES

	Surface	Mining	Standard -25 °C to...	Z604 -40 °C to...
ATEX	x	x	x	x
IECEX	x	x	x	x
EAC	x	x	x	x
Australia	x	x	x	x
Inmetro	x	x	x	x
Nepsi	x		x	x
MA		x	x	
UL / CSA	x		x	x

The certificates can be found on www.wandfluh.com

SWITCHING CHARACTERISTICS



• Conventional valve • Valve detented

CHARACTERISTICS

- Poppet valve
- Flange construction
- Direct operated
- 3/2-way
- Pressure tight switching solenoid
- Form-closed detent
- Leakage free
- Available in an ex-protected or non ex-protected version



Wandfluh AG | Helkenstrasse 13 | CH-3714 Frutigen

Tel. +41 33 672 72 72 | Fax +41 33 672 72 82 | sales@wandfluh.com | www.wandfluh.com