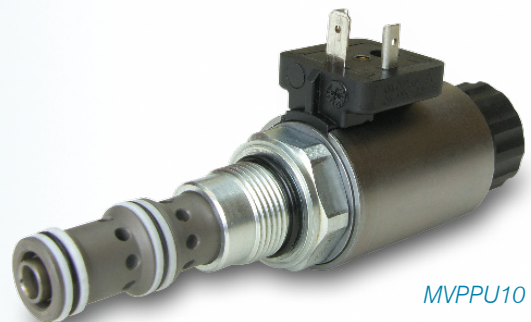


## Proportional pressure control cartridge with UNF - thread

The proportional pressure control cartridge MVPPU10 as pilot-operated version is designed for volume flows of up to 60 l/min. It is utilised in applications, where a constant pressure with high volume flow changes has to be controlled. For example, the load control of hydro-motors or in applications where larger oil flows have to be controlled under constant pressure. The proportional pressure control cartridge is designed for a maximum pressure of 400 bar. Various pressure levels are available.

The cartridge for the cavity 7/8" – 14 UNF is suitable for modular constructions.

- ◆ Size: 7/8" - 14 UNF
- ◆ Data sheet No. 2.3-672
- ◆  $Q_{\max}$  60 l/min
- ◆  $p_{\max}$  400 bar
- ◆  $p_N$  20/63/100/160/200/275/350 bar



In the Wandfluh programme there are also proportional pressure control cartridges with connection threads according to ISO 7789. This in the sizes M18x1,5, M22x1,5, M33x2 and M42x2.

### Further informationen

Further information can be found on the indicated data sheet 2.3-672 and on our website. We are happy to advise you on the selection of suitable components or on the design of your application.

Do not hesitate to contact us!