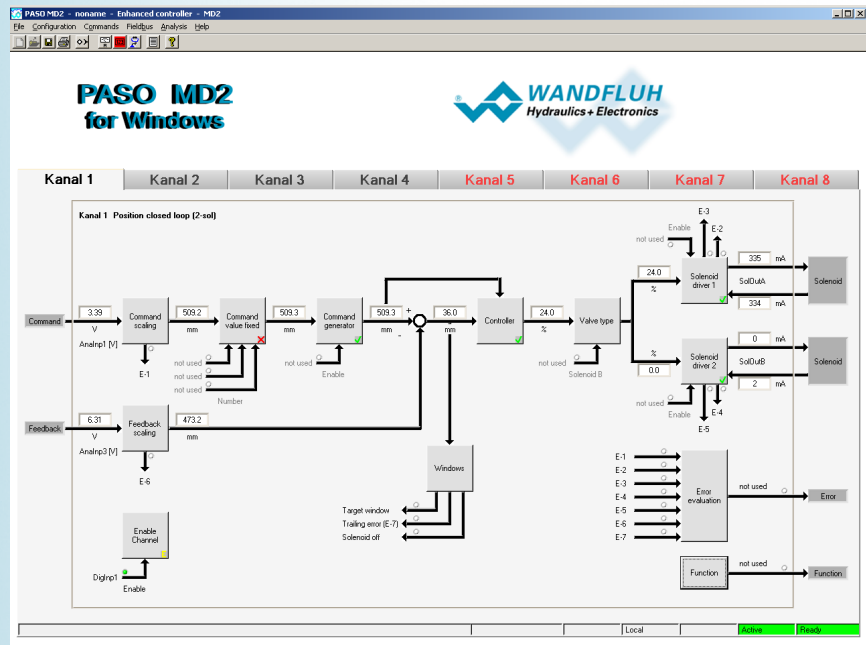


MD2 Amplifier and controller sub-assembly

The actuation for hydraulic valves
in extreme ambient conditions

Field of application

- ✓ Valve amplifier
- ✓ Pressure - / volume flow controller
- ✓ Position controller



PASO - Operating software – the universal tool

- ✓ Parameterisation / Programming
- ✓ Process data display
- ✓ Integrated oscilloscope
- ✓ Remote control functions



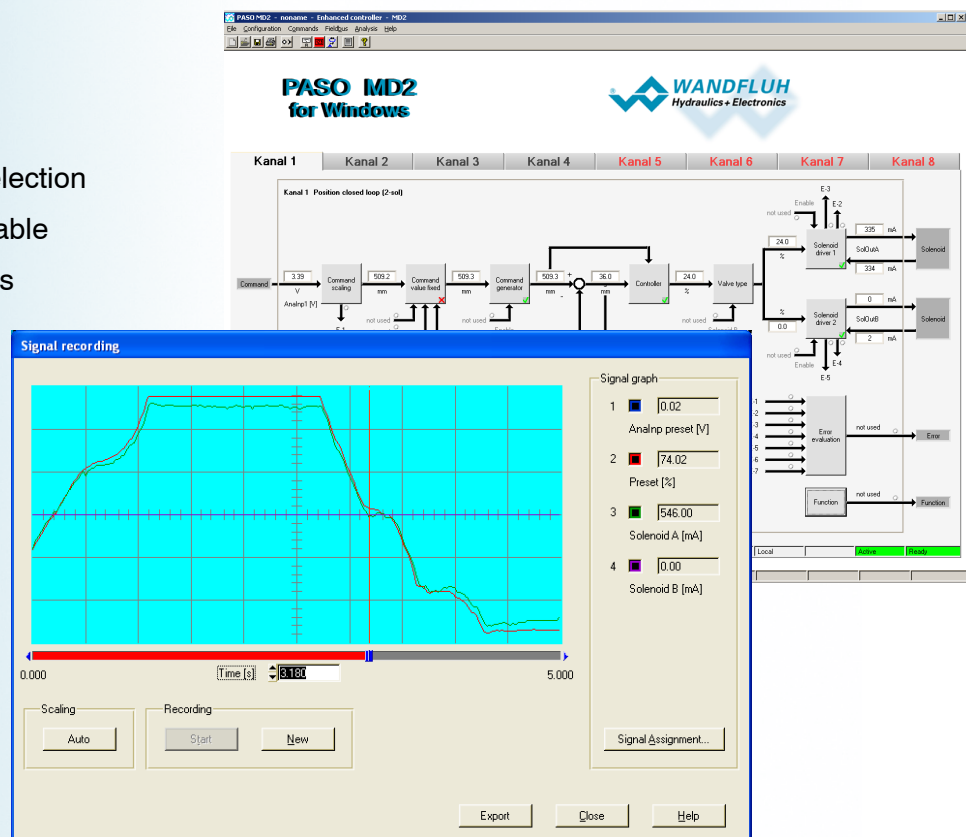
Analysing – and diagnostics tools

Process data

- ✓ Clear structures
- ✓ Real time

Oscilloscope

- ✓ Free signal selection
- ✓ Trigger selectable
- ✓ Signal analysis



Field-bus – the industrial network

CANopen (DSP-408)

- ✓ IEC - standard
- ✓ Conforming to the device profile
- ✓ Controlling
- ✓ Parameterisation
- ✓ PASO - support

