

# Safety valve BVTM22

The Safety valve BVTM22 is a pilot operated pressure relief valve in a screw-in cartridge construction with the thread M22x1,5 for cavities in accordance with ISO 7789. The valve is designed according to AD-2000 and EC-type tested in accordance with the Pressure Equipment Directive 97/23/EG. Within the range of 50–350 bar, the factory-set response pressures can be freely selected. Five values are available as preferential response pressures. The maximum permissible volume flow is 30 l/min.

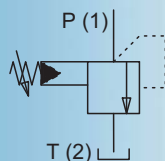
Thread	M22x1,5
Cavity according to	ISO 7789
Max. response pressure	350 bar
Preferential response pressures	100/140/250/330/350 bar
Permissible volume flow	30 l/min
Data sheet	2.1-532



Safety valve • BVTM22

Please refer to the specifications of the data sheet.

## Symbol



## Definitions

### 1: Response pressure

Factory-set pressure at which the valve opens

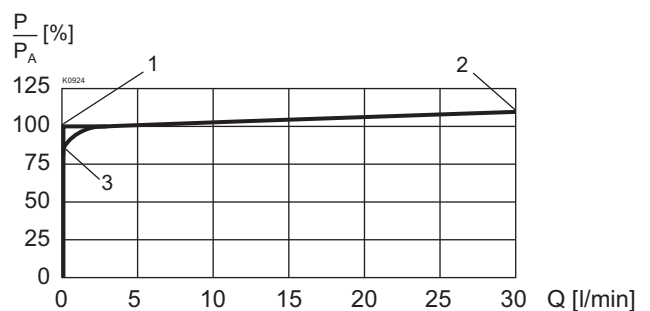
### 2: Blowing-off pressure

The blowing-off pressure is situated at a maximum of 10% above the response pressure

### 3: Closing pressure

Pressure at which the valve closes.

The closing pressure is situated at a maximum of 15% below the response pressure



## Applications

- For the protection of hydraulic systems with pressure accumulators, resp. pressure reservoirs
- For which safety valves are required

## Further Information

You will find further information on our website. We will be happy to advise you with your selection of the suitable components or with the designing of your application.

Do not hesitate to contact us.