

Pilot operated solenoid poppet valves, through-flow in both directions

Wandfluh is extending its poppet valve program by four pilot operated solenoid poppet valves in the sizes M18x1.5, M20x1.5, M22x1.5 und 3/4"-16UNF.

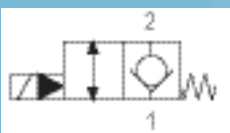
The 2/2-way screw-in cartridges are through-flow in both directions and tight-sealing on one side. The new cartridges are based on the well-proven know-how, which Wandfluh possesses in the field of poppet valves, and do justice to the high demands with respect to an excellent seating tightness. The plug-in coil principle with a pressure-tight axial conduit makes for a simple servicing and maintenance.

	SVSPM18	SVSPM20	SVSPM22	SVSPU34
Thread size	M18x1,5	M20x1,5	M22x1,5	3/4"-16UNF
Cavity acc. to	ISO 7789	Wandfluh standard	ISO 7789	Wandfluh standard
max. working pressure	350 bar	350 bar	350 bar	350 bar
max. volume flow	50 l/min	50 l/min	80 l/min	50 l/min
Data sheet	1.11-2080	1.11-2081	1.11-2082	1.11-2083

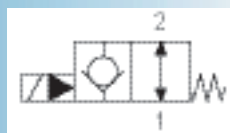
Characteristics

- Pilot operated as 2/2-way execution
- „Current-free open - “ and „Current-free closed -“ versions
- Rust protection through zinc-coated external components
- Robust steel spool
- Excellent sealing tightness
- High power density
- Compact construction
- High quality with respect to switching security, sealing tightness and service life

Symbols



Current-free closed



Current-free open



SVSPM18



SVSPM20

Solenoid coils

- Same solenoid coil for all four versions
- Standard nominal voltages 12 - and 24 VDC or 110-, 115 - and 230 VAC
- Various special voltages available on request
- Slip-on coil rotatable and interchangeable without opening the hydraulic circuit
- Plug base, ISO 4400 / DIN 43 650 or AMP Junior-Timer
- Stranded conductor version
- Protection class IP65 in accordance with EN 60 529

Applications

- For demanding applications in the stationary and mobile modular construction
- In applications, in which the oil leakage-free holding of loads, tensioning and clamping are of decisive importance
- Lifting technology, forklift trucks, elevating platforms
- Earth moving machines, wind power generators

Further Information

You will find further technical information can be obtained on our website. We will be happy to advise you in the selection of the suitable components for your application.

Do not hesitate to contact us.



SVSPM2



SVSPU34

www.wandfluh.com