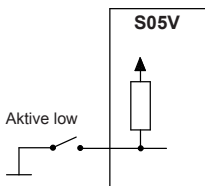


Comparison list Wiring SD6 / S05V

Signal name	SD6.0...0-AA Terminal No.	S05V Terminal No.	Remarks
Inputs			
Supply voltage +	5	31	
Supply voltage 0 VDC	6	32	
Preset voltage +	9	15	
Preset voltage -	10	-	S05 does not have a differential input
Preset current +	11	24	
Preset current -	12	-	S05 does not have a differential input
Analogue ground	8	25	
Enable / Disable	1	23	S05 active low, SD6 active high ¹⁾
Solenoid B active	2	33	S05 active low, SD6 active high ¹⁾
Bridge for 0...20 mA preset	-	21 / 22	Parameter setting with SD6
Module bridge in- / output	-	12 / 11	SD6: Additional functions already built in
Outputs			
Output current / voltage converter	-	14	SD6: Current or voltage preset selectable through parameter setting
Stabilised output voltage	7	34	
Output solenoid A +	15	45	
Output solenoid A -	16	44	
Output solenoid B +	13	42	
Output solenoid B -	14	43	
Error	3	-	S05 does not have an error detection
Solenoid B active	4	13	
Measuring point			
Dithersignal	-	41	SD6: Analysis / diagnosis through PASO

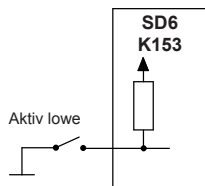
¹⁾ Example of an active low and an active high wiring

Not connected = enabled



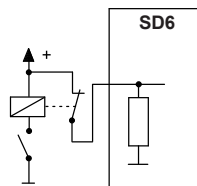
Disable

Not connected = enabled



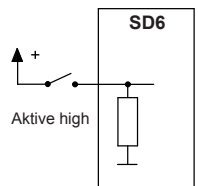
Disable

Not connected = enabled



Disable

Not connected = disabled



Enable