

NOTICE
THIS DRAWING EMBODIES A CONFIDENTIAL PROPRIETARY DESIGN ORIGINATED BY G.W. LISK COMPANY INC. AND ALL DESIGN, MANUFACTURING, REPRODUCTION, USE AND SALE RIGHTS REGARDING THE SAME ARE EXPRESSLY RESERVED. IT IS SUBMITTED UNDER A CONFIDENTIAL RELATIONSHIP FOR A SPECIFIC PURPOSE, AND THE RECIPIENT AGREES BY ACCEPTING THIS DRAWING NOT TO SUPPLY OR DISCLOSE ANY INFORMATION REGARDING IT TO ANY UN-AUTHORIZED PERSON, OR TO INCORPORATE IN OTHER PROJECTS ANY SPECIAL FEATURES PECULIAR TO THIS DESIGN. ALL PATENT RIGHTS HERETO ARE EXPRESSLY RESERVED BY G.W. LISK COMPANY, INC., CLIFTON SPRINGS, NEW YORK.

Complies with CENELEC EN50014, EN50019, EN50028
For use in Zone 1 hazardous locations.

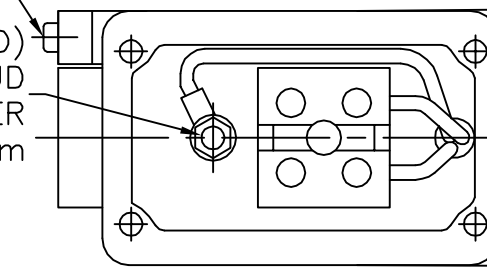
Ex II 2 G EEx me II

Certificate no.: BASEEFA02ATEX0199X

REVISIONS			
REV	DESCRIPTION	DATE	APPROVED

LISK PART NO.	COIL ASSEMBLY	VOLTS	WATTS	OHMS ± 10%	TEMP CLASS AND RANGE -54*AMBIENT	MAX. DC VOLTS	FORCE (N) ± 10% SEE NOTE 2
D12-2171D-296	H-21736-296	12	30	4.8	T4 @ 60°	12	51
D12-2171D-297	H-21736-297	24	30	19.2	T4 @ 60°	24	51
D12-2171D-264	H-21736-264	12	10	14.4	T4 @ 60°	12.5	19
D12-2171D-322	H-21736-322	24	10	57.6	T5 @ 60°	25	19
D12-2171D-616	H-21736-616	12	25	5.8	T4 @ 60°	13.2	42
D12-2171D-153	H-21736-153	24	25	23.0	T4 @ 60°	26.3	42

EXTERNAL EARTH (GROUND)
M4X0.7 SCREW
CLAMP AND LOCKWASHER
TORQUE: 2.5Nm



INTERNAL EARTH (GROUND)
M4X0.7 STUD
NUT AND LOCKWASHER
TORQUE: 2.5Nm

COVER MOUNTED WITH
M4X0.7 SCREWS
TORQUE: 2.5Nm

TERMINAL BOX COVER
MARKINGS:

PROTECTION CODE e
DO NOT OPEN
WHILE ENERGISED

WARNING: CABLE ENTRY
TEMPERATURE MAY
EXCEED 70°C

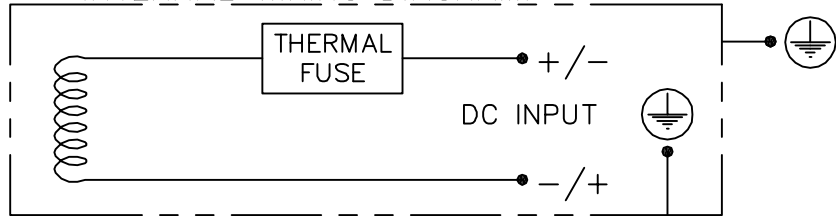
WARNING: ELECTROSTATIC
RISK. CLEAN ONLY
WITH A DAMP CLOTH

USE IN CONJUNCTION
WITH SUB-CIRCUIT FUSE
BS88, IEC269.
2A MAX. AC
6A MAX. DC

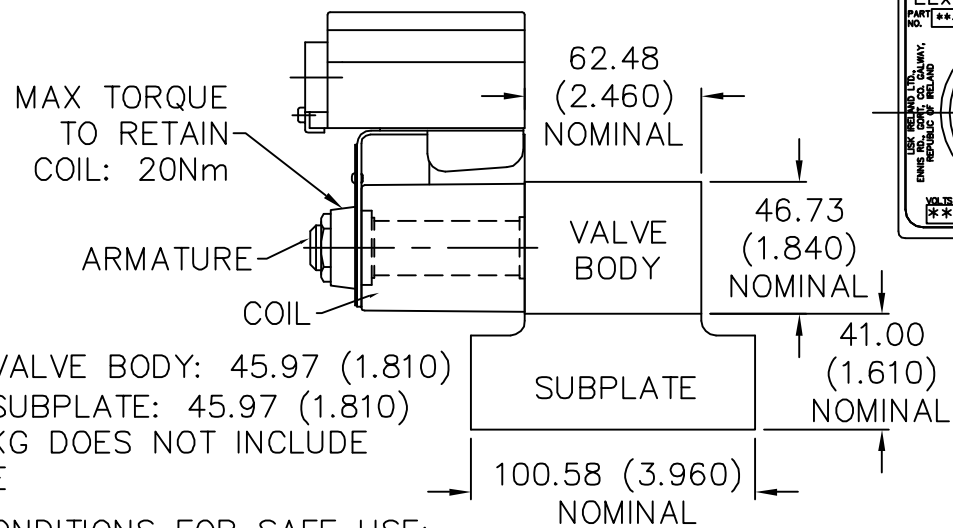
CERTIFIED PRODUCT
NO MODIFICATIONS PERMITTED
WITHOUT THE APPROVAL OF
THE CERTIFIED PRODUCT AUTHORITY

CPA T.G. 02 JULY '03

INTERNAL WIRING DIAGRAM.



USE A RING TONGUE TERMINAL TO ATTACH INTERNAL GROUND TO M4 POST WITH SUPPLIED NUT AND LOCKWASHER. TO RESET THE THERMAL FUSE DISCONNECT OPERATING VOLTAGE AND ALLOW SOLENOID TO COOL.



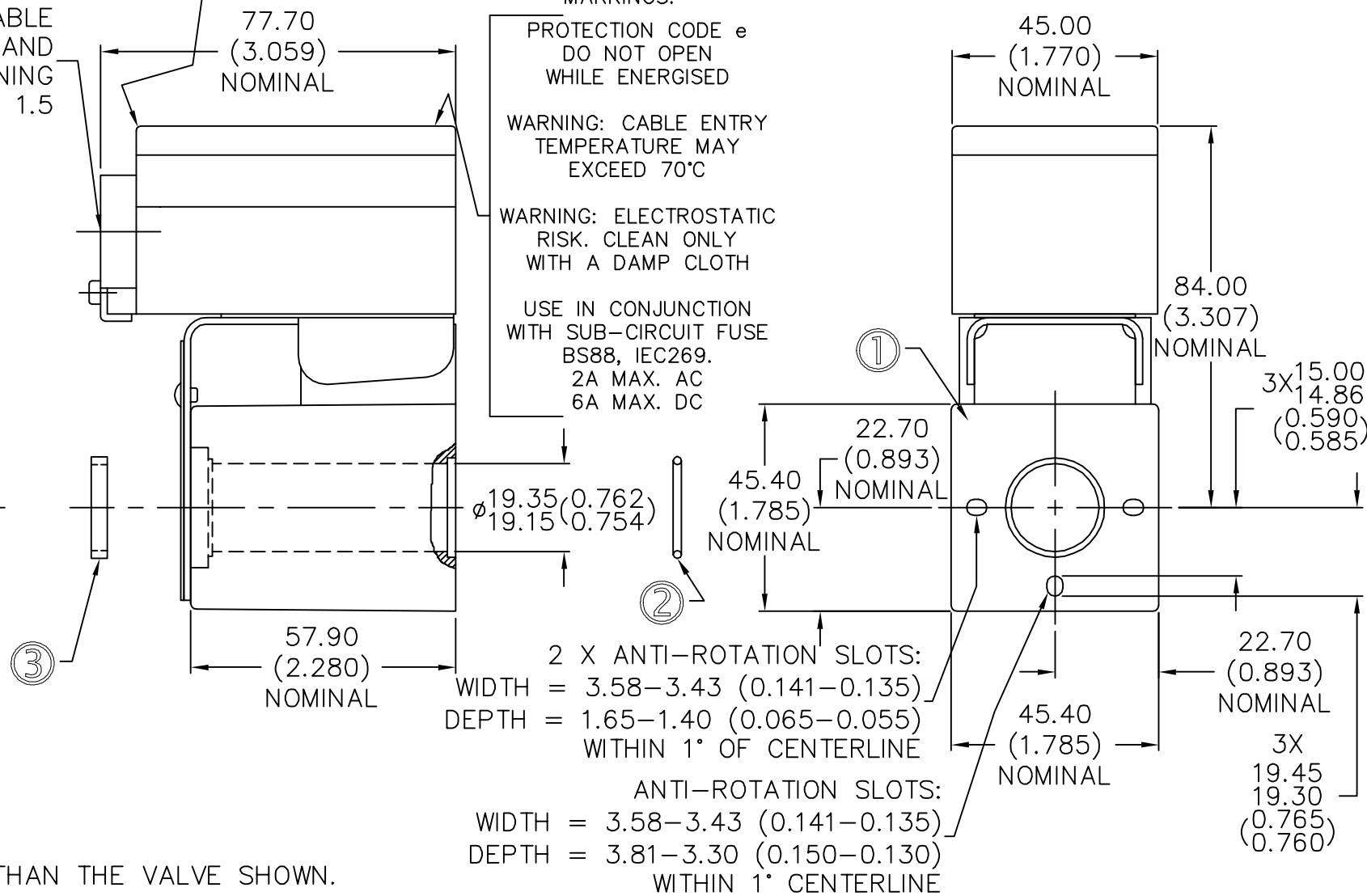
WIDTH OF VALVE BODY: 45.97 (1.810)
WIDTH OF SUBPLATE: 45.97 (1.810)
MASS: 2.2KG DOES NOT INCLUDE AMARATURE

SPECIAL CONDITIONS FOR SAFE USE:

1. THIS SOLENOID MUST BE USED WITH HEAT DISSIPATION EQUAL OR GREATER THAN THE VALVE SHOWN.
2. THE SOLENOID VALVE ASSEMBLY MUST NOT BE THERMALLY LAGGED.
3. THE FLUID FLOWING THROUGH THE VALVE MUST NOT EXCEED THE SPECIFIED AMBIENT OPERATING TEMPERATURE.
4. THE SOLENOID SHALL BE PROTECTED BY FUSES RATED FOR A PROSPECTIVE SHORT CIRCUIT CURRENT OF AT LEAST 4000A.

NOTES:

1. DUTY = CONTINUOUS
2. FORCE (PUSH), @ 3mm (0.118) STROKE @ NOMINAL VOLTAGE @ 25°C (77°F) WITH D12-954D TUBE = (SEE CHART).
3. CABLE ENTRY TEMPERATURE MAY EXCEED 70°C
4. USE IN CONJUNCTION WITH SUB-CIRCUIT FUSE BS88, IEC269, 6A MAX (DC).
5. DO NOT OPEN TERMINAL BOX WHILE ENERGISED. ELECTROSTATIC RISK, CLEAN ONLY WITH A DAMP CLOTH.
6. SUBSTITUTION OF ANY COIL COMPONENTS (INCLUDING ALL FASTENERS) NOT SPECIFIED BY LISK MAY VOID CERTIFICATION.



ITEM	PART NUMBER	DESCRIPTION	QTY
3	H-11101	SEAL	1
2	GORS070018N1	O-RING	1
1	H-21736-*	COIL ASSEMBLY	1

mm INCH ()	3rd ANGLE PROJ.	DRAWN N.D. 01 JULY '03	LISK IRELAND LTD. ENNIS ROAD GORT CO GALWAY IRELAND	
Manufactured by: Lisk Ireland Ltd, Phone: +353 (0)91 631711 Fax: +353 (0)91 633011	CHECK R.D. 01 JULY '03	ENGINEER N.D. 01 JULY '03	COIL	
	Ref: D12-955D	SIZE A3	DWG NO D12-2171D-*	REV -
		DO NOT SCALE	WEIGHT	SHEET 1 OF 1