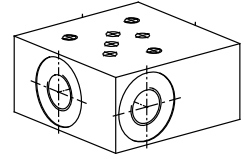


Threaded subplate

- Threaded connection G1/8"
- $p_{max} = 350 \text{ bar}$

NG3-Mini[®]

DESCRIPTION

Threaded subplate with interface for valve NG3-Mini acc. to Wandfluh standard. The threaded subplate is made from phosphated steel.

TYPE CODE

	B	G	3	S	#	
Interface						
Threaded subplate						
Nominal size 3-Mini						
Connections location: P, T, A, B, side						
Design-Index (Subject to change)						

GENERAL CHARACTERISTICS

Designation	Threaded subplate
Nominal size	NG3-Mini acc. to Wandfluh standard
Fastening	3 tapped holes for cylinder screw M4
Connection	Threaded connections A, B, P, T G1/8"
Mounting position	any
Weight	$m = 0,2 \text{ kg}$

HYDRAULIC SPECIFICATIONS

Working pressure	$p_{max} = 350 \text{ bar}$
------------------	-----------------------------

SYMBOL

DIMENSIONS
