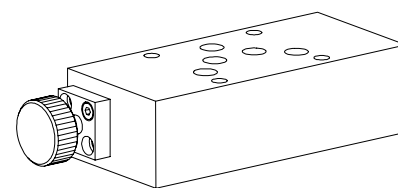


**Drain valve
Sandwich construction**

- $Q_{max} = 60 \text{ l/min}$
- $p_{max} = 350 \text{ bar}$

NG10
 ISO 4401-05

DESCRIPTION

Drain valve NG10 with interface according to ISO 4401-05. Sandwich design. Valves for 3 flow directions are available. The sandwich body is made from phosphated steel. The turn knob from anodised aluminium.

FUNCTION

A spherical, hardened closing element seals the pressurised part leak free against tank port. By turning the knob the connection to tank will be opened. Knob may be blocked in any position by a set screw.

APPLICATION

Drain valves are mainly used in systems with an accumulator which need to be depressurised for revisions.

CONTENT

GENERAL SPECIFICATIONS	1
HYDRAULIC SPECIFICATIONS	1
SYMBOLS / TYPES	1
DIMENSIONS	2
PARTS LIST	2

TYPE CODE

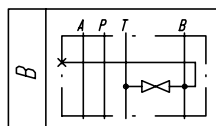
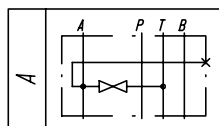
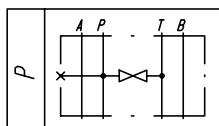
	A	AH	<input type="checkbox"/>	10	/	<input type="checkbox"/>	#	<input type="checkbox"/>
International standard interface ISO								
Type description for drain valve								
Drain valve:	P → T	<input type="checkbox"/>	P					
	A → T	<input type="checkbox"/>	A					
	B → T	<input type="checkbox"/>	B					
Normal size 10								
Threaded port open with plug	<input type="checkbox"/>	O						
with minimes screw coupling	<input type="checkbox"/>	V						
	<input type="checkbox"/>	M						
Design-Index (Subject to change)								

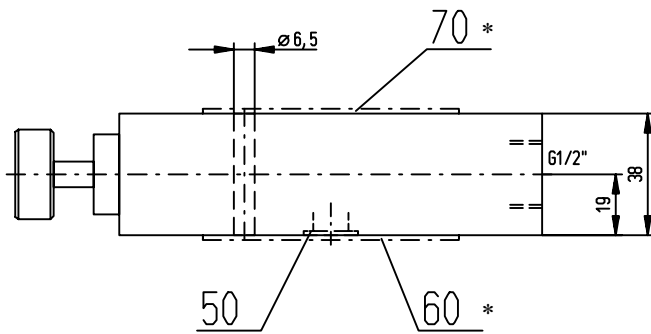
GENERAL SPECIFICATIONS

Description	Drain valve
Nominal size	NG10 acc. to ISO 4401-05
Construction	Sandwich construction
Mounting	4 holes for hexagon socket screw M6 or studs M6
Connections	Connection plates Multistation flange subplate Longitudinal stacking system
Ambient temperature	-20...+50°C
Mounting position	any
Fastening torque	$M_D = 9,5 \text{ Nm}$ (Quality 8.8)
Weight	$m = 2,4 \text{ kg}$

HYDRAULIC SPECIFICATIONS

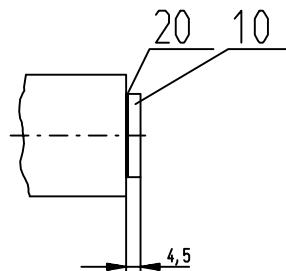
Fluid	Mineral oil, other fluid on request
Contamination efficiency	ISO 4406:1999, class 20/18/14 (Required filtration grade $\beta_{10...16} \geq 75$) refer to data sheet 1.0-50/2
Viscosity range	12 mm ² /s...320 mm ² /s
Fluid temperature	-20...+70°C
Peak pressure in ports	$p_{max} = 350 \text{ bar}$
Peak pressure in port T	$p_{max} = 50 \text{ bar}$
Max. volume flow	$Q_{max} = 60 \text{ l/min}$

SYMBOLS / TYPES


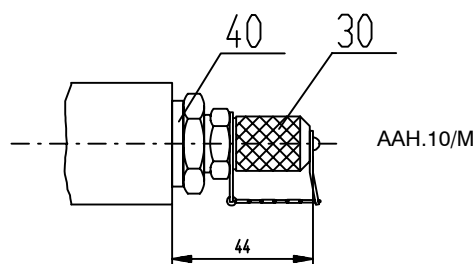
DIMENSIONS


* only AAHB10/ .

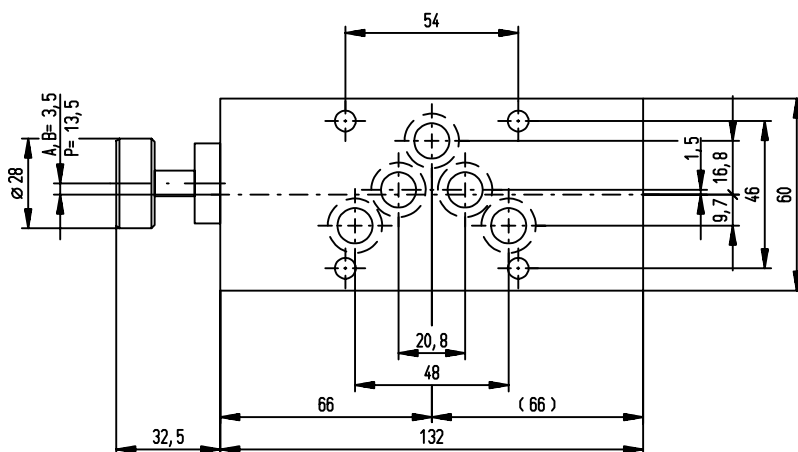
AAH.10/O



AAH.10/V



AAH.10/M



On types AAHB, P10 the adjustment is located on B-Side

PARTS LIST

Position	Article	Description
10	238.5203	Plug DIN 908 G1/2"
20	49.1220	Cop. seal ring NG 22x26x0,8 DIN 7603
30	152.9101	Mini-mess fitting 1620/1/4"
40	240.5318	Fitting RI 1/2x1/4
50	160.2140	O-ring ID 14,00x1,78
60	173.4700	Intermediate plate AZB10
70	173.4650	Sealing plate ADB10

Technical explanation see data sheet 1.0-100E