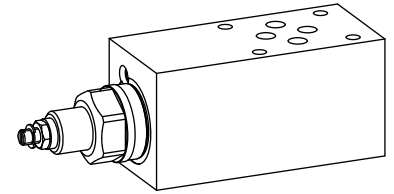


**2-way flow control valve**  
**Flange- and sandwich construction**

- $Q_{max} = 48 \text{ l/min}$ ,  $p_{max} = 350 \text{ bar}$
- $Q_{Nmax} = 40 \text{ l/min}$

**NG6**  
 ISO 4401-03

**DESCRIPTION**

Direct operated, pressure compensated flow control valve in flange- and sandwich construction. Flow control screw-in cartridges M22x1,5 acc. to ISO 7789 are installed. In the sandwich plates for A, B and AB line, a bypass check valve for reversed free flow is installed. A bypass non-return valve plate for the flange valve, for free flow from B to A, can be ordered separately. Two flow ranges are available. The flange body is painted and the sandwich plates are phosphatised.

**FUNCTION**

The 2-way flow control valve is designed to keep the oil flow to any actuator constant irrespectiv of the load.

**APPLICATION**

2-way flow control valves are used where the supply volume flow has to be kept constant even when the load fluctuates. De-pending on the application, a distinction is made between restricting the forward flow or the return flow.

**TYPE CODE**

		Q	Z	<input type="checkbox"/>	<input type="checkbox"/>	A06 -	<input type="checkbox"/>	-	<input type="checkbox"/>	#	<input type="checkbox"/>	
Flow control valve												
2-way-construction												
Setting versions:	Key	<input type="checkbox"/>	S									
	Control knob	<input type="checkbox"/>	D									
	Lock	<input type="checkbox"/>	K									
	Cover	<input type="checkbox"/>	A									
Flange construction	<input type="checkbox"/>	F										
Sandwich construction	<input type="checkbox"/>	S										
International standard interface ISO, NG6												
Type list / Function:	Flange construction flow control from A to B	<input type="checkbox"/>	A/B	Sandwich construction flow control in P T	<input type="checkbox"/>	P T	Sandwich construction meter-out flow control in A B A and B	<input type="checkbox"/>	A B AB	Sandwich construction meter-in flow control in A B A and B	<input type="checkbox"/>	AV BV ABV
Nominal volume flow rates $Q_N$ :	2,5 l/min	<input type="checkbox"/>	2,5	6,3 l/min	<input type="checkbox"/>	6,3	16 l/min	<input type="checkbox"/>	16	25 l/min	<input type="checkbox"/>	25
	40 l/min	<input type="checkbox"/>	40									
Design-Index (Subject to change)												

**GENERAL SPECIFICATIONS**

Description	2-way flow control valve
Nominal size	NG6 acc. to ISO 4401-03
Construction	Flange- and sandwich construction
Mounting	4 holes for socket cap screws M5 or studs screws M5
Connection	Threaded connection plates Multi-flange subplate Longitudinal stacking system
Ambient temperature	-20...50 °C
Mounting position	any
Fastening torque	$M_D = 5,5 \text{ Nm}$ (Qual. 8.8), for fastening screws $M_D = 50 \text{ Nm}$ for screw-in cartridge
Weight	• Flange type $m = 0,81 \text{ kg}$
(without screw-in cartridge)	• Sandwich type A,B $m = 1,15 \text{ kg}$
	• Sandwich type P,T, AB $m = 1,45 \text{ kg}$

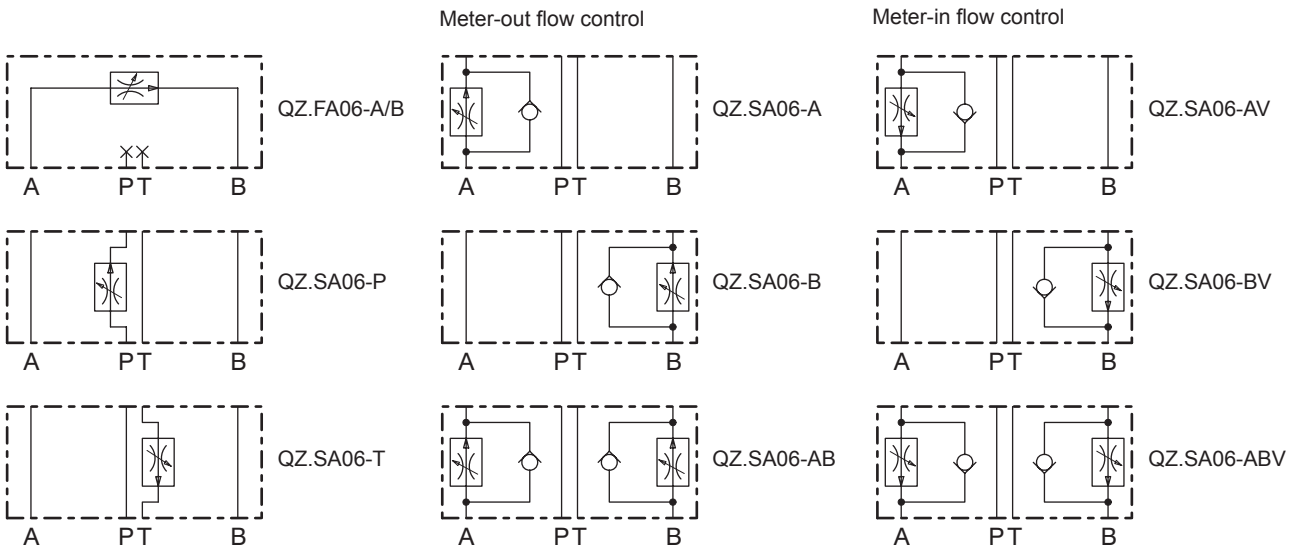
**HYDRAULIC SPECIFICATIONS**

Fluid	Mineral oil, other fluid on request
Contamination efficiency	ISO 4406:1999, class 18/16/13 (Required filtration grade $\beta_{6...10} \geq 75$ ) see data sheet 1.0-50/2
Viscosity range	12 mm <sup>2</sup> /s...320 mm <sup>2</sup> /s
Fluid temperature	-20...+70 °C
Peak pressure	$p_{max} = 350 \text{ bar}$
Min. volume flow	$Q_{min} = 0,1 \text{ l/min}$
Max. volume flow	$Q_{max} = 48 \text{ l/min}$

**SCREW-IN CARTRIDGES INSTALLED**

The following screw-in cartridges are used in either the flange body or the sandwich body:

Type	Designation	Data sheet no.
QZ.PM22	flow control valve •2-way	2.5-535

**TYPE CHARTS**


By turning around (longitudinal axis) valves with meter-out function, meter-in function can be achieved:

- A turns into AV
- B turns into BV
- AB turns into ABV


**REMARK!**

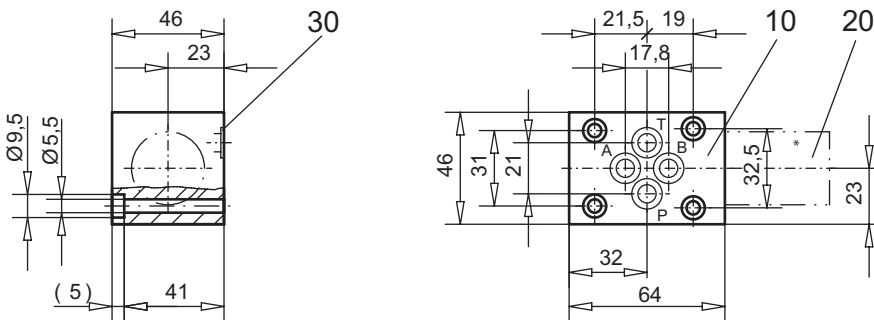
Detailed performance data and additional hydraulic specifications may be drawn from the data sheets of the corresponding installed pressure relief cartridge.


**CAUTION!**

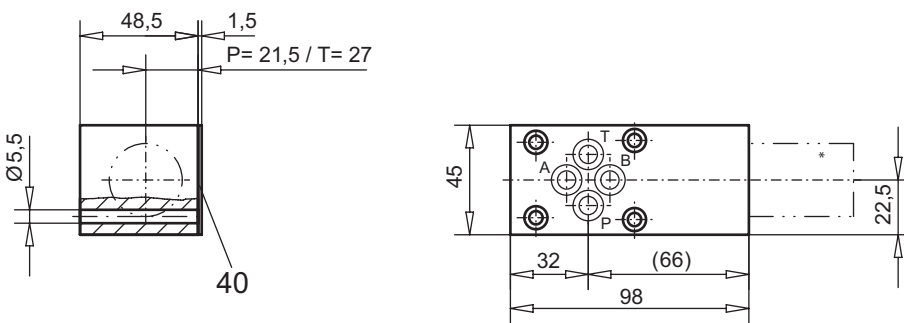
The performance data especially the „**pressure-flow-characteristic**„, on the data sheets of the screw-in cartridges refer to the screw-in cartridges only. The additional pressure drop of the flange body respectively sandwich body must be taken into consideration.

**DIMENSIONS**

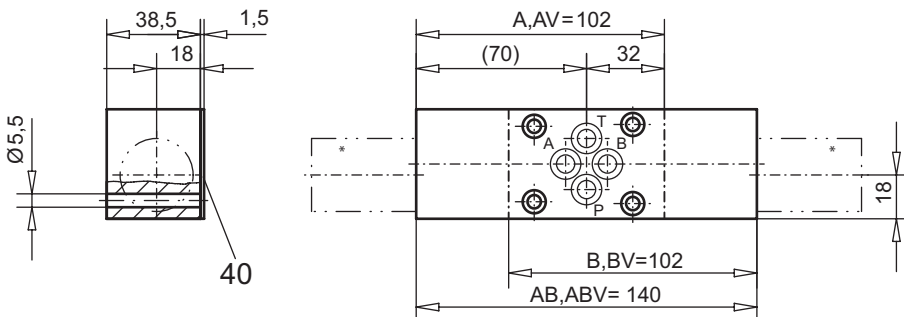
Flange construction QZ.FA06 - A/B



Sandwich construction QZ.SA06 - P, T



Sandwich construction QZ.SA06 - A, B, AB, AV, BV, ABV



\* The total lengths depends on the cartridge type, see data sheet 2.5-535

**PARTS LIST**

Position	Article	Description
10	134.5202	Flange body
	134.5630	Sandwich plate P, T
	134.6634	Sandwich plate A
	134.6635	Sandwich plate B
	134.6633	Sandwich plate AB
20	633.3 . . .	Flow control cartridge M22x1,5 see data sheet 2.5-535
30	160.2093	O-ring ID 9,25x1,78
40	173.3650	Sealing plate ADB6

Technical explanation see data sheet 1.0-100E