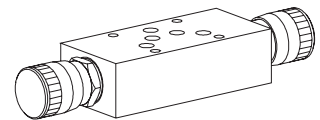


Restrictor valve with reverse free flow check
Sandwich construction

- $Q_{max} = 100 \text{ l/min}$
- $Q_N = 60 \text{ l/min}$
- $p_{max} = 350 \text{ bar}$

NG10
ISO 4401-05


DESCRIPTION

Restrictor valve sandwich type NG10 with interface to ISO 4401-05. The non-return throttle valve is available in two different variants, namely the standard and the precision throttle (FD). The turning knob is made from aluminium, all other parts made of steel, have been phosphated.

FUNCTION

Using the precision thread adjusting spindle, the restriction of the volume flow can be continuously adjusted. With the spindle fully screwed home, the volume flow is zero, and a metallic edge makes a leak-tight closure. In the opposite direction, the spring-loaded tapered piston opens and volume flow with a load pressure drop is enabled. The throttle effect is produced by an annular gap which can be varied in size, or by means of a triangular edge. Because of the nature of the design, there is only a small amount of leakage.

APPLICATION

Sandwich type, one-way restrictors are used where volume flows have to be controlled in one flow direction according to the load. Depending on the application, a distinction is made between restricting the forward flow or the return flow. These sandwich valves are particularly suitable for machine tools and also all kinds of handling operations.

CONTENTS

GENERAL SPECIFICATIONS.....	1
HYDRAULIC SPECIFICATIONS.....	1
TYPE LIST / FUNCTION.....	1
CHARACTERISTICS.....	2
DIMENSIONS.....	2
PARTS LIST.....	2

TYPE CODE

	A	URD	10	-	#	
International mounting interface ISO						
Description for restrictor valve						
Meter out in:						
A <input type="checkbox"/> A		B <input type="checkbox"/> B				
A and B no remark						
Meter-in in:						
A <input type="checkbox"/> VA		B <input type="checkbox"/> VB				
A and B <input type="checkbox"/> V						
Nominal size 10						
Additional marking for precision throttle <input type="checkbox"/> FD						
Design-Index (Subject to change)						

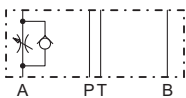
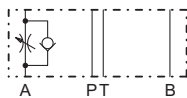
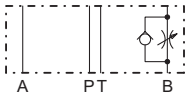
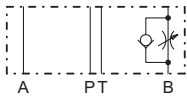
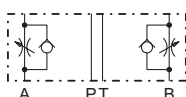
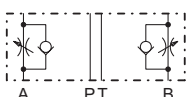
GENERAL SPECIFICATIONS

Denomination	Restrictor valve with reverse free flow check
Nominal size	NG10 acc. to ISO 4401-05
Construction	Sandwich
Mounting	4 mounting holes for socket head cap screws M6 or stud screws M6
Connections	Threaded connection plates, Multi-flange subplates, Longitudinal stacking system
Ambient temperature	-20...+50° C
Mounting position	any
Fastening torque	$M_D = 9,5 \text{ Nm}$ (Qual. 8.8) for fastening screws
Weight	Depending on the type 1,8...2,3 kg

HYDRAULIC SPECIFICATIONS

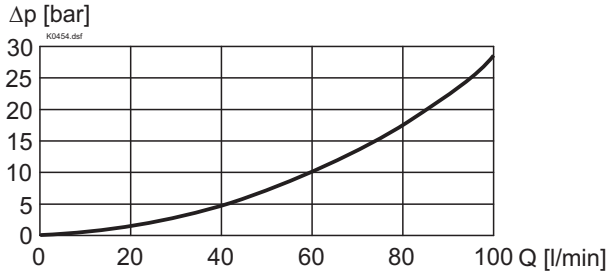
Fluid	Mineraoil, other fluid on request
Contamination efficiency	ISO 4406:1999, class 20/18/14...21/19/15 (Required filtration grade $\beta_{10...25} \geq 75$) refer to data sheet 1.0-50/2
Viscosity range	12 mm ² /s...320 mm ² /s
Fluid temperature	-20...+70° C
Peak pressure	$p_{max} = 350 \text{ bar}$
Pressure required to open the check valve	$p_o = 0,8 \text{ bar}$
Nominal volume flow rates	$Q_N = 60 \text{ l/min}$ Q_N at 10 bar valve pressure loss
Max. volume flow	$Q_{max} = 100 \text{ l/min}$
Leakage volume flow	Almost leak free with closed restrictor

TYPE LIST / FUNCTION

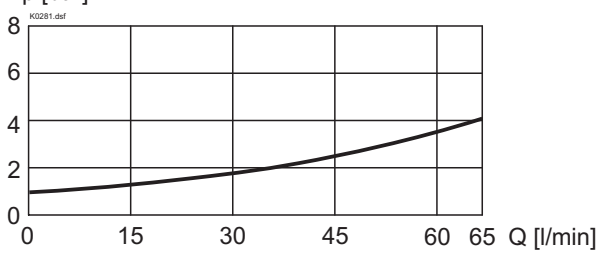
Meter-out: 	AURDA10	Meter-in: 	AURDVA10	Valves for restricting the meter-in flow are achieved by turning the meter-out valves restrictors (lateral axis): AURDA10 get AURDVB10 AURDB10 get AURDVA10 AURD10 get AURDV10 Valves for restricting the meter-in flow are supplied with a sealing plate and an in-intermediate plate.
	AURDB10		AURDVB10	
	AURD10		AURDV10	

CHARACTERISTICS Oil viscosity $\nu = 30 \text{ mm}^2/\text{s}$

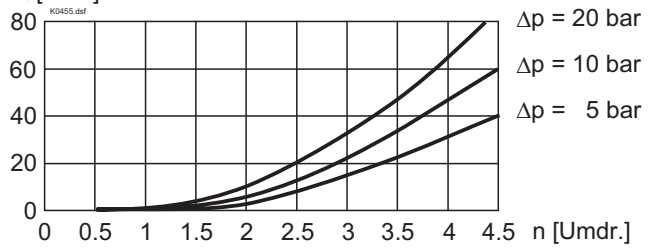
$\Delta p = f(Q)$ Pressure loss/flow characteristics



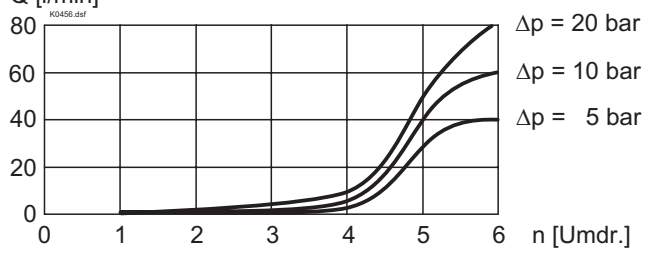
$\Delta p = f(Q)$ Pressure loss/flow characteristics over non-return valve



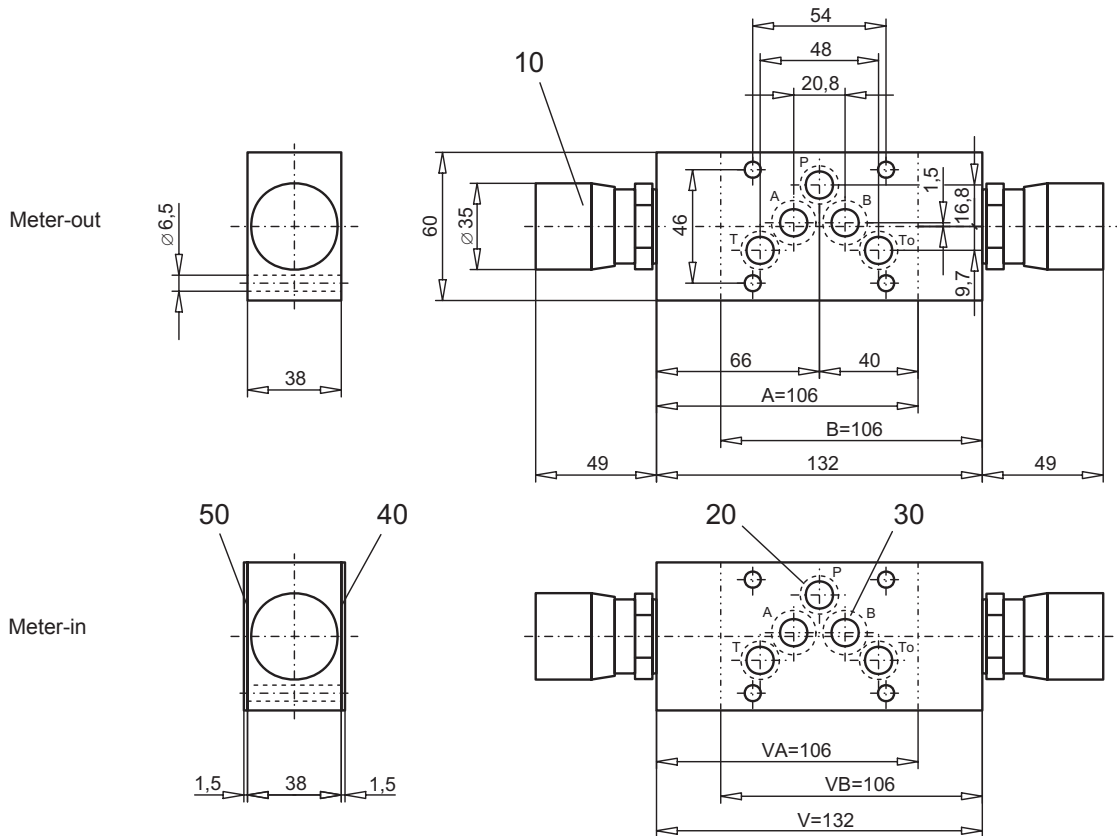
$Q = f(n)$ Volume flow adjustment characteristics (Standard)



$Q = f(n)$ Volume flow adjustment characteristics (Precision throttle)



DIMENSIONS



PARTS LISTS

Position	Article	Description
10	114.1201	Turning knob
20	160.2120	O-ring ID 12,42x1,78
30	160.2132	O-ring ID 13,10x2,62 in line with check valve
40	173.4650	Sealing plate ADB10
50	173.4700	Intermediate plate AZB10

Technical explanation see data sheet 1.0-100E