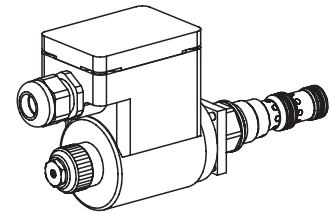


**Proportional pressure reducing valve  
Screw-in cartridge**

- Pilot operated
- $Q_{max} = 60$  l/min
- $p_{max} = 400$  bar
- $p_{N\ red\ max} = 350$  bar

**M22x1,5**  
 ISO 7789

**DESCRIPTION**

Pilot operated proportional pressure reducing valve as a screw-in cartridge with a thread M22x1,5 for cavity according to ISO 7789. Activated with explosion proof solenoid. The cartridge body made of steel is zinc coated for corrosion protection.

**EEx:** in accordance with European standards EN 50014, EN 50019, EN 50028

**e:** increased safety

**m:** encapsulation

**Group II:**

for all applications except mining

**Zone 1 / 21** (and 2 / 22):

explosive mixtures present intermittently

**EC-type examination certificate:**

PTB 01 ATEX 2129 X

**FUNCTION**

The proportional pressure regulating valve controls the pressure in port A (1). Proportionally to the solenoid current solenoid force and pressure in port A (1) rise. The valve functions practically independently of pressure in port P (2). A pressure rise in Port A (1) above the set pressure e.g. due to an active oil consumer, will be prevented by relieving excess volume flow to tank via port T (3). With deneergised solenoid the volume flow passes freely from port P to the consumer port A. Design specific a minimum adjustable pressure according characteristic curve cannot be underpassed. To control the valve proportional amplifiers are available from Wandfluh (see register 1.13).

**APPLICATION**

The valve has its application in hydraulic systems, in which the pressure frequently has to be changed. The facility for remote control and signal processing from process control systems enable elegant, comfortable solutions to problems. Installation of the screw-in cartridge in control blocks as well as in the Wandfluh sandwich plates (vertical stacked systems) and flange valves of the NG4-Mini, NG6 and NG10 types. (Please note the separate data sheets in register 2.3). Cavity tools are available for machining the cavities in steel and aluminium (hire or purchase). Please refer to the data sheets in register 2.13.

**CONTENT**

GENERAL SPECIFICATIONS.....	1
HYDRAULIC SPECIFICATIONS .....	1
SYMBOL.....	1
ELECTRICAL SPECIFICATIONS.....	2
START-UP .....	2
CHARACTERISTICS.....	2
DIMENSIONS/ SECTIONAL DRAWINGS.....	2
PARTS LIST .....	2
ACCESSORIES.....	2

**TYPE CODE**

M	V	C	PM22	-		-	G24	/	T4	#		
Pressure reducing valve												
Pilot operated												
Proportional explosion proof, execution EEx em II												
Screw-in cartridge M22x1,5												
Standard nominal pressure range $p_{N\ red}$ :	20 bar	<input type="text" value="20"/>	200 bar	<input type="text" value="200"/>	63 bar	<input type="text" value="63"/>	250 bar	<input type="text" value="250"/>	100 bar	<input type="text" value="100"/>	350 bar	<input type="text" value="350"/>
	160 bar	<input type="text" value="160"/>										
Standard nominal voltage:	$U_N = 24$ VDC											
Execution	T1...T4											
Design-Index (Subject to change)												

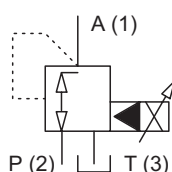
• Data sheet is valid from design-index # 2 on

**GENERAL SPECIFICATIONS**

Description	Pilot operated proportional pressure reducing valve
Construction	Screw-in cartridge for cavity to ISO 7789
Operations	Proportional solenoid
Mounting	Screw-in thread M22x1,5
Admissible ambient temperature *	-20...+40 °C
Mounting position	any, preferably horizontal
Fastening torque	$M_D = 50$ Nm for screw-in cartridge
Weight	$m = 1,1$ kg

**HYDRAULIC SPECIFICATIONS**

Fluid	Mineral oil, other fluid on request
Contamination efficiency	ISO 4406:1999, class 18/16/13 (Required filtration grade $\beta_{6...10} \geq 75$ ) see data sheet 1.0-50/2
Viscosity range	12 mm <sup>2</sup> /s...320 mm <sup>2</sup> /s
Admissible fluid temperature *	-20...+40 °C (at inlet and at outlet)
Peak pressure	$p_{max} = 400$ bar
Nominal pressure range:	$p_{N\ red} = 20$ bar, 63 bar, 100 bar, 160 bar, 200 bar, 250 bar, 350 bar
Volume flow range	$Q = 0...60$ l/min
Pilot- and leakage volume flow	see characteristics
Repeatability	$\leq 1,5$ % **
Hysteresis	$\leq 4$ % **
	** at optimal dither signal

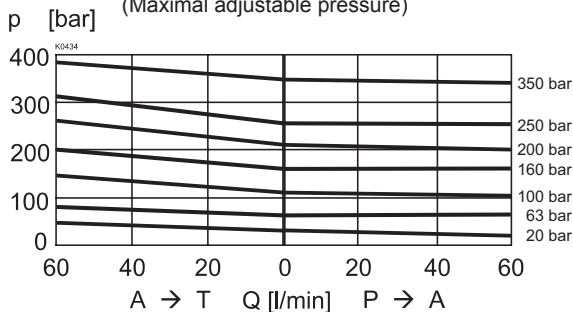
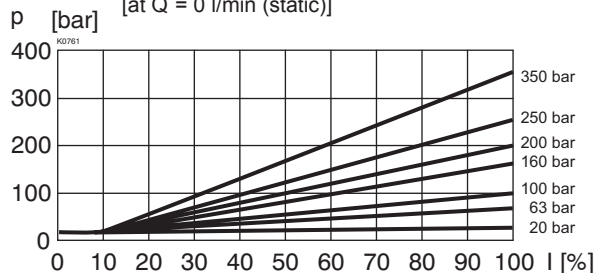
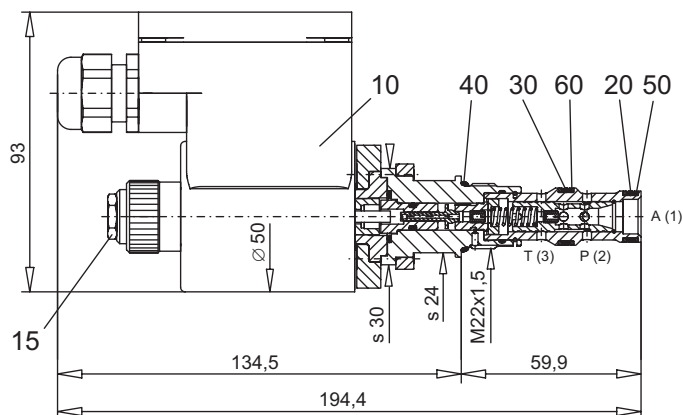
**SYMBOL**


\* Deviating pressure medium - or ambient temperatures are possible for special arrangements after checking and authorisation by a responsible inspector. Measures for the prevention of the exceeding of the admissible solenoid surface - and internal temperatures can be: a good ventilation, low ambient temperatures (for higher pressure medium temperatures), limitation of the maximum possible power supply voltage, a short switching-on duration, installation on large heat dissipating blocks, etc. The responsibility in all cases lies with the operator, resp. with his inspector.

**ELECTRICAL SPECIFICATIONS**

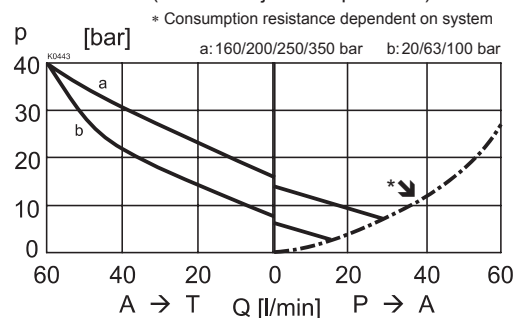
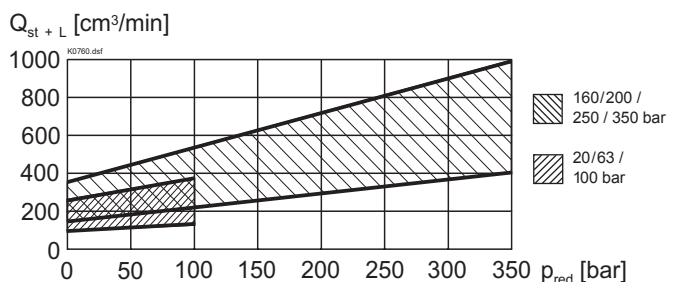
Construction	Proportional solenoid, wet pin push type, pressure tight
Standard nominal voltage	$U_N = 24$ VDC DC = Ripple 20 %; wired with VDR
Limiting current	$I_G = 585$ mA
Relative duty factor	100 % DF
Protection class	IP65 / IP67 acc. to EN 60 529
Connection/Power supply	Through cable entry for cable diameter 6...12 mm
Execution T4:	II 2 G EEx em II T4 (for gas) II 2 D IP65 T130°C (for dust)
Performance limit	$P_G = 17$ W

**CHARACTERISTICS** oil viscosity  $\nu = 30$  mm<sup>2</sup>/s

 $p_{red} = f(Q)$  Pressure volume flow characteristics  
 (Maximal adjustable pressure)

 $p_{red} = f(I)$  Pressure adjustment characteristics  
 [at  $Q = 0$  l/min (static)]

**DIMENSIONS / SECTIONAL DRAWINGS**

**START-UP**

1. In the power supply for each solenoid a fuse of an appropriate rating (max. 3 times  $I_G$  of solenoid, DIN 41571 or IEC 127) respectively a motor circuit breaker with electromagnetic and thermal interruption must be installed. The fuse may be located in the power supply unit for the solenoid or between power supply and solenoid. The voltage rating for the fuse must be equal or higher than the one for the solenoid.

2. The solenoid coils must only be operated on the valve belonging to them. More information concerning the installation and commissioning is contained in the operating instructions supplied together with the solenoid coil.

 $p_{red} = f(Q)$  Pressure volume flow characteristics  
 (Minimal adjustable pressure)

 $Q_{st+L} = f(p)$  Pilot- and leakage volume flow characteristic [A(1) → T(3)]  
 (Pressure in P(2) = 350 bar)

**PARTS LIST**

Position	Article	Description
10	207.5286	Slip-on coil 2A52W EExem II T4
15	253.8000	Plug with integrated manual override HB4,5
20	160.2140	O-ring ID 14,00x1,78
30	160.2156	O-ring ID 15,60x1,78
40	160.2188	O-ring ID 18,77x1,78
50	049.3176	Back-up ring RD 14,1x17x1,4
60	049.3196	Back-up ring RD 16,1x19x1,4

**ACCESSORIES**

Cartridge built into flange- or sandwich body  
 Flange body/sandwich plate  
 Proportional amplifier

register 2.3  
 register 1.13

Cavity drawing ISO 7789-22-04-0-98  
 and cavity tools see

data sheet 2.13-1004

Technical explanation see data sheet 1.0-100E