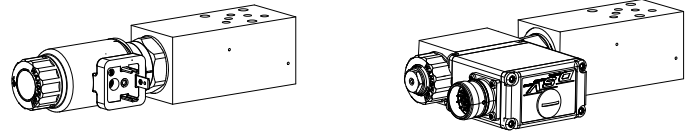


**Proportional throttle valve
 Flange and sandwich construction**

- Direct operated, not pressure compensated
- $p_{max} = 350 \text{ bar}$

NG4-Mini[®]

DESCRIPTION

Directly operated proportional throttle valve in sandwich construction. Screw-in cartridge M22x1,5 in accordance with ISO 7789. In sandwich types for A and B line, a by-pass check valve for reversed free flow is incorporated. The flange body is painted, the sandwich plates are phosphatised.

FUNCTION

The force controlled proportional solenoid running in the fluid acts directly on the control spool which opens or closes the triangular shaped throttling notches in the cartridge body. The throttle opening, and therefore the flow volume, changes proportionally to the current absorption of the proportional solenoid. When the solenoid is without current, the control spool is held in the closed position by a spring. To control the valve proportional amplifiers are available from Wandfluh (see register 1.13).

APPLICATION

Proportional throttle valves are suitable for precise feed control systems. An extremely sensitive opening and closing response allows a smooth control of movements in stationary or mobile installations, e.g. machine tools, public vehicles. Mini-4 proportional throttle valves are used where hydraulic systems have to be both light and compact.

TYPE CODE

Throttle valve			D	N	P	<input type="checkbox"/>	A04	-	<input type="text"/>	-	<input type="text"/>	#	<input type="text"/>
Normally closed													
Proportional													
Flange construction													
Sandwich construction													
Mounting interface acc. to Wandfluh standard, NG4-Mini													
Type list / Function													
Flange construction													
A → B	<input type="checkbox"/>	<input type="checkbox"/>											
Nominal volume flow level, nominal voltage, etc. of the built-in screw-in cartridge													
Examples:													
Design-Index (Subject to change)													

GENERAL SPECIFICATIONS

Description	Proportional throttle valve
Nominal size	NG4-Mini acc. to Wandfluh standard
Construction	Flange and sandwich
Operations	Proportional solenoid
Mounting	3 mounting holes for cyl.screws M5 or double ended screws M5
Connection	Threaded connection plates Multi-flange subplates Longitudinal stacking system
Weight	Depending on the type m = 0,95...1,2 kg

SCREW-IN CARTRIDGES INSTALLED

The following screw-in cartridges are used in either the flange body or the sandwich body:

Type	Designation	Data sheet no.	Q_{max}^*
DNPPM22	normally closed	2.6-531	32 l/min
DNPPM22-../ME	normally closed, with integrated electronics	2.6-541	32 l/min

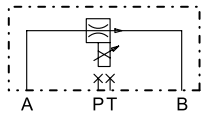
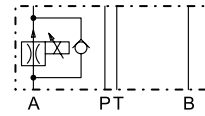
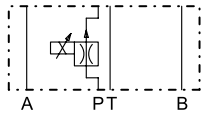
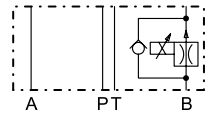
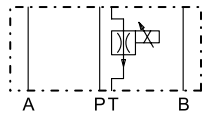
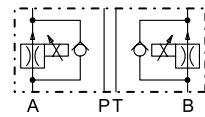
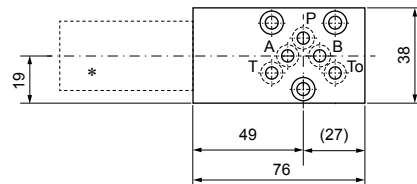
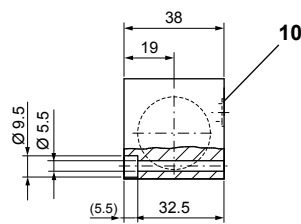
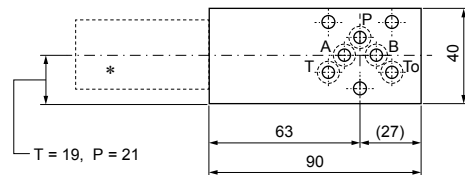
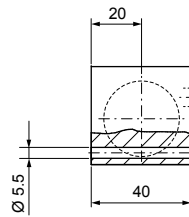
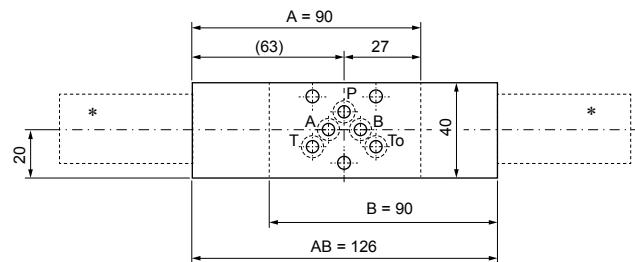
* Can deviate from the values on the data sheets of the screw-in cartridges.


REMARK!

Detailed performance data and additional hydraulic and electric specifications may be drawn from the data sheets of the corresponding installed screw-in cartridge.


CAUTION!

The performance data, especially the „**pressure-flow-characteristic**“, on the data sheets of the screw-in cartridges, refer to the screw-in cartridges only. The additional pressure drop of the flange body, resp. sandwich body must be taken into consideration.

SYMBOLS / DIMENSIONS
DN.FA04-A/B

DN.SA04-A

DN.SA04-P

DN.SA04-B

DN.SA04-T

DN.SA04-AB

Flange construction DN.FA04-A/B

Sandwich construction DN.SA04-P, T

Sandwich construction DN.SA04-A, B, AB

PARTS LIST

Position	Article	Description
10	160.2052	O-ring ID 5,28x1,78

* The envelop dimensions of the screw-in cartridge are show on their corresponding data sheets.

ACCESSORIES

Proportional amplifier
 Technical explanation see data sheet 1.0-100

Register 1.13