

Solenoid operated poppet valve cartridge

- ◆ solenoid actuated
- ◆ pilot operated
- ◆ normally open and normally closed
- ◆ 2/2-way
- ◆ $Q_{max} = 80 \text{ l/min}$
- ◆ $p_{max} = 350 \text{ bar}$

DESCRIPTION

Pilot operated 2/2-way solenoid poppet valve in screw-in cartridge construction for cavity according to ISO 7789. The CB execution is closed in the energised position, the BC execution in the de-energised position. In this, the main spool closes practically leakage-free by means of the applied pressure. In the opposite flow direction, the valve opens after reaching the opening pressure. The pressure tight encapsulated Ex-protection solenoid coil prevents an explosion on the inside penetrating to the outside as well as an ignitable surface temperature.

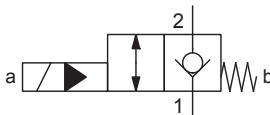
CERTIFICATES

	Surface	Mining	Standard -25 °C to...	Z604 -40 °C to...
ATEX / UKEX	x	x	x	x
IECEX	x	x	x	x
CCC	x	x	x	x
EAC	x	x	x	x
Australia	x	x	x	x
MA		x	x	
USA / Canada	x		x	x
PESO	x		x	x

The certificates can be found on www.wandfluh.com

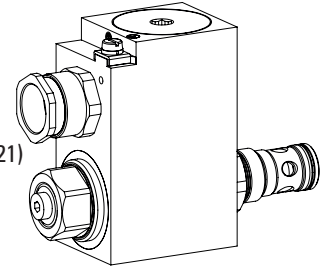
SYMBOL

„Normally closed“ BC



M22 x 1,5 ISO 7789

Ex db IIC T6, T4 Gb (Zone 1)
 Ex tb III C T80 °C, T130 °C Db (Zone 21)
 Ex db I Mb
 ⓧ II 2 G Ex db IIC T6, T4
 ⓧ II 2 D Ex tb III C T80 °C, T130 °C
 ⓧ I M2 Ex db I Mb
 Class I, Division 1, Group A, B, C, D T4
 Class II & III, Division I, Group E, F, G T4



APPLICATION

These valves are suitable for applications in explosion-hazard areas, open cast and also in mines. Poppet valves are used where tight closing functions of the valve are essential like leakage-free load holding, clamping or gripping. For machining the cartridge cavity in steel and aluminum blocks, cavity tools are available (hire or purchase). Please refer to the data sheets in register 2.13.

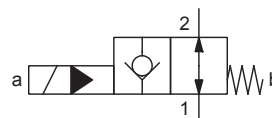
ACTUATION

Actuation	Switching solenoid, wet pin push + pull type, pressure tight
Execution	MKY45 / 18x60 (data sheet 1.1-183)
Connection	Cable gland for cable Ø 6,5...14 mm

Attention! The UC execution is always supplied without cable gland



„Normally open“ CB



TYPE CODE

				S V Y PM22 - <input type="text"/> - <input type="text"/> / <input type="text"/> <input type="text"/> - <input type="text"/> # <input type="text"/>	
Poppet valve					
Pilot operated					
Ex-protection execution, Exd					
Screw-in cartridge M22 x 1,5					
2/2 way, «normally closed»		<input type="checkbox"/> BC			
2/2 way, «normally open»		<input type="checkbox"/> CB			
Nominal voltage U _N		12 VDC	<input type="checkbox"/> G12	115 VAC	<input type="checkbox"/> R115
		24 VDC	<input type="checkbox"/> G24	230 VAC	<input type="checkbox"/> R230
Nominal power P _N		9 W	<input type="checkbox"/> L9	Ambient temperature up to:	
		15 W	<input type="checkbox"/> L15	40 °C or 90 °C	
				70 °C	
Certification		ATEX, UKEX, IECEX, EAC, CCC		USA / Canada	
		Australia		India	
		MA		<input type="checkbox"/> UC-M187	
				<input type="checkbox"/> PE	
Sealing material		NBR			
		FKM (Viton)			
		NBR -40° C		<input type="checkbox"/> D1	
				<input type="checkbox"/> Z604 (only with 15 W)	
Design index (subject to change)					
1.11-2084					

GENERAL SPECIFICATIONS

Designation	2/2-way poppet valve
Construction	Pilot operated
Mounting	Screw-in cartridge construction
Nominal size	M22 x 1,5 according to ISO 7789
Actuation	Ex-protection switching solenoid
Ambient temperature	Operation as T6 -25...+40 °C (L9) Operation as T4 -25...+90 °C (L9) -25...+70 °C (L15) -40...+70 °C (L15)
Weight	2,25 kg
MTTFd	150 years

HYDRAULIC SPECIFICATIONS

Working pressure	p _{max} = 350 bar
Opening pressure	1 bar version BC 2 bar version CB
Maximum volume flow	Q _{max} = 80 l/min, see characteristics
Leakage oil	Poppet type, max. 0,15 ml / min (approx. 3 drops / min) at 30 cSt
Fluid	Mineral oil, other fluid on request
Viscosity range	12 mm ² /s...320 mm ² /s
Temperature range fluid	Operation as T6 NBR -25...+40 °C (L9) FKM -20...+40 °C (L9) Operation as T4 NBR -25...+70 °C (L9 or L15) FKM -20...+70 °C (L9 or L15) NBR 872 -40...+70 °C (L15)
Contamination efficiency	Class 20 / 18 / 14
Filtration	Required filtration grade β 10...16 ≥ 75, see data sheet 1.0-50

ELECTRICAL SPECIFICATIONS

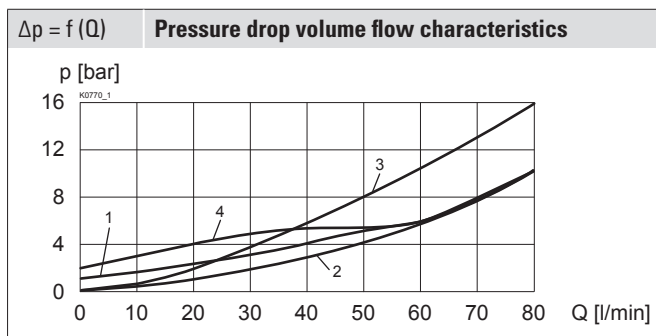
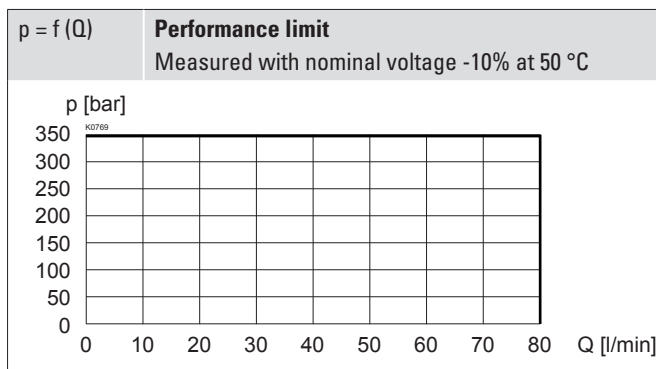
Protection class	IP65 / 66 / 67
Relative duty factor	100 % DF
Switching frequency	5'000 / h
Voltage tolerance	± 10 % with regard to nominal voltage
Standard nominal voltage	12 VDC, 24VDC, 115 VAC, 230 VAC AC = 50 to 60 Hz ± 2 %, with built-in two-way rectifier
Standard nominal power	9 W, 15 W
Temperature class	Nominal power 9 W: T1...T6 Nominal power 15 W: T1...T4

Note! Other electrical specifications see data sheet 1.1-183



PERFORMANCE SPECIFICATIONS

Oil viscosity $\nu = 30 \text{ mm}^2/\text{s}$



Note! With the L15 execution for ambient temperatures up to 70 °C, the characteristics have been evaluated with an ambient temperature of 50 °C.



The switching times depend on the volume flow, pressure and viscosity. In case of small volume flows, the switching time can get considerably longer.

SURFACE TREATMENT

- ◆ The cartridge body, the slip-on coil and the armature tube are zinc-nickel coated

STANDARDS

Cartridge cavity	ISO 7789
Explosion protection	Directive 2014 / 34 / EU (ATEX)
Flameproof enclosure	EN / IEC / UL 60079-1, 31
Cable entry	EN 60079-0, 1, 7, 15, 31
Protection class	EN 60 529
Contamination efficiency	ISO 4406

Switching times

	Type	Flow direction	Energised	De-energised
SVYPM22	BC	2 → 1	approx. 30 ms	approx. 120 ms
	CB	2 → 1	approx. 50 ms	approx. 80 ms

	BC	CB
de-energised 1 → 2	1	2
de-energised 2 → 1	-	3
energised 1 → 2	2	4
energised 2 → 1	3	-

Attention! Long periods of non-actuation can reduce the switching performance



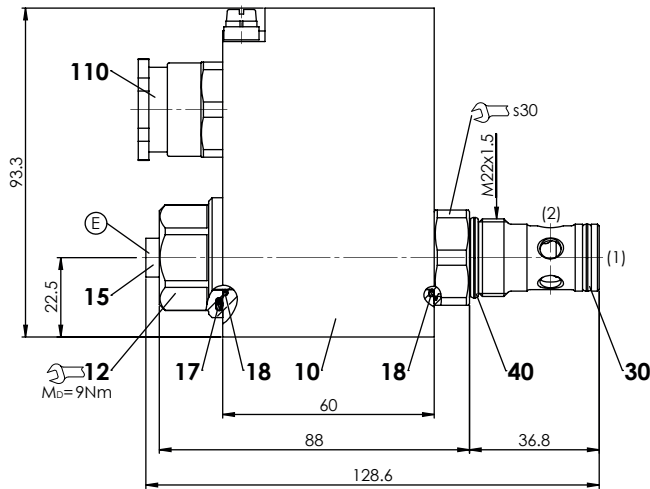
MANUAL OVERRIDE

Screw plug (HB0), no actuation possible.
 Optionally HN (K) or HG (K) (pushing) resp. HZ (K) (pulling)
 → See data sheet 1.1-311

Attention! The manual override HZ (K) can neither be dismantled nor retrofitted



DIMENSIONS



E = Air bleed screw

Dimensions of the solenoid coil see data sheet 1.1-183

PARTS LIST

Position	Article	Description
10	263.6...	Solenoid coil MK.45 / 18 x 60
12	154.2603	Knurled nut Ex M18 x 1,5 x 18
15	239.2033	Screw plug HB0 (incl. seal)
110	111.1080	Cable gland M20 x 1,5
	...	Seal kit SVYPM22 BC/CB

Seal kit consisting of:

17	O-ring	ID 25,07 x 2,62
18	O-ring	ID 17,17 x 1,78
30	O-ring	ID 15,60 x 1,78 (polyurethan)
40	O-ring	ID 18,77 x 1,78

INSTALLATION NOTES

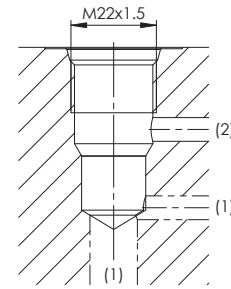
Mounting type	Screw-in cartridge M22 x 1,5
Mounting position	Any, preferably horizontal
Tightening torque	$M_D = 60$ Nm Screw-in cartridge $M_D = 9$ Nm knurled nut

Attention! For stack assembly please observe the remarks in the operating instructions



HYDRAULIC CONNECTION

Cavity drawing according to ISO 7789-22-01-0-98



Note!



For detailed cavity drawing and cavity tools see data sheet 2.13-1008

ACCESSORIES

Technical explanations	Data sheet 1.0-100
Hydraulic fluids	Data sheet 1.0-50
Filtration	Data sheet 1.0-50
Relative duty factor	Data sheet 1.1-430

SEALING MATERIAL

NBR or FKM (Viton) as standard, choice in the type code

COMMISSIONING

Attention! When commissioning, the valve must be vented under pressure (max. two rotations of screw E).



The solenoid coil must only be put into operation, if the requirements of the operating instructions supplied are observed to their full extent. In case of non-observance, no liability is assumed.