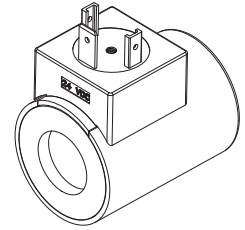


**Solenoid coil W.E37/16 x 40
 according to DIN VDE 0580
 Protection class IP 65/67/69K**

DESCRIPTION

The slip-on solenoid coil W.E37/16 x 40 is available in three different connection versions (see type code). The construction corresponds to the DIN VDE 0580-Norm. The housing is made of steel (nickel-chromium coated), the connector socket is made of plastic material.

FUNCTION

With the combination of an armature tube the function of a switching solenoid or of a proportional solenoid results.

APPLICATION

The solenoid coils are mainly utilised in hydraulic applications.

TYPE CODE

Metal housing, round		W	<input type="checkbox"/>	E37 / 16 x 40 -	<input type="checkbox"/>	#	<input type="checkbox"/>
Connection execution							
Connector socket EN 175301-803/ISO 4400	<input type="checkbox"/>	D					
Connector socket AMP Junior-Timer	<input type="checkbox"/>	J					
Connector Deutsch DT04-2P	<input type="checkbox"/>	G					
Coil execution							
Internal coil diameter 16 mm							
Coil length 40 mm							
Nominal voltage U _N	12 VDC	<input type="checkbox"/>	G12				
	24 VDC	<input type="checkbox"/>	G24				
Design-Index (Subject to change)							

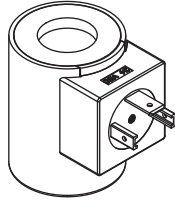
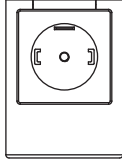
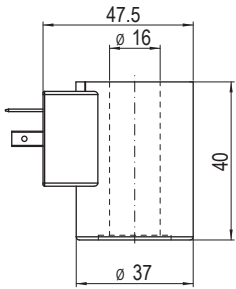
SPECIFICATIONS

		12 VDC	24 VDC
Coil winding			
insulation class	H (180 °C)		
Relative duty factor	100% DF/ED combined with armature tube and valve		
Ambient temperature	-20...+50 °C		
Corrosion protection	Salt spray test according to EN ISO 9227: ≥ 200 h		
Nominal power (W)	(Switching function)	20,5	20,5
Limiting power (W)	(Proportional function)	14	14
Limiting current (50 °C) (A)	(Proportional function)	1,16	0,58
Nominal resistance (Ω)		7	28
Number of windings (-)		710	1420
Weight of solenoid coil (kg)		0,22	0,22

SAFE OPERATION

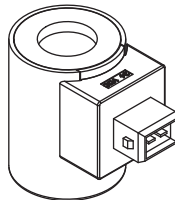
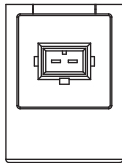
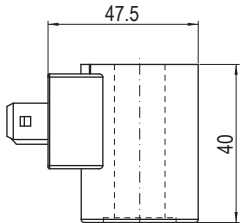
Caution: Because of the danger of over-heating the solenoid coil must only be commissioned together with an armature tube as well as with a valve.

TYPE LISTE / DIMENSIONS / GENERAL SPECIFICATIONS



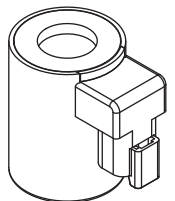
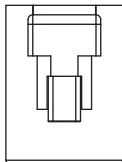
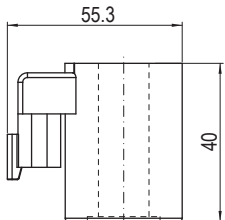
Execution: W **D** E37/16x40-...

- 3-poles 2 P+E
 - Protection class IP 65
- With corresponding mating connector
(not included in delivery)
and professional assembly.



Execution: W **J** E37/16x40-...

- 2-poles 2P
 - only for $U_N \leq 75$ VDC
 - Protection class IP 66
- With corresponding mating connector
(not included in delivery)
and professional assembly.



Execution: W **G** E37/16x40-...

- 2-poles 2P
 - only for $U_N \leq 75$ VDC
 - Protection class IP 67 and 69 K
- With corresponding mating connector
(not included in delivery)
and professional assembly.

Technical explanation see data sheet 1.1-400 and 1.1-410