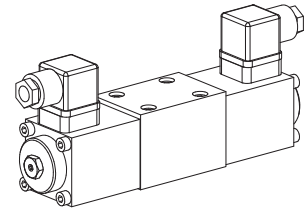


**Solenoid operated spool valve**

- 4/2-way impulse valve
- $Q_{max} = 60 \text{ l/min}$
- $p_{max} = 350 \text{ bar}$

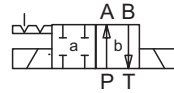
**NG6**  
ISO 4401-03



**TYPE CODE**

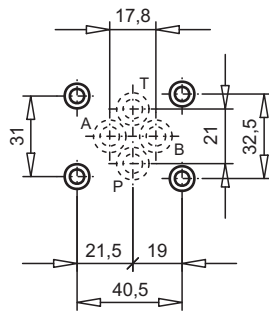
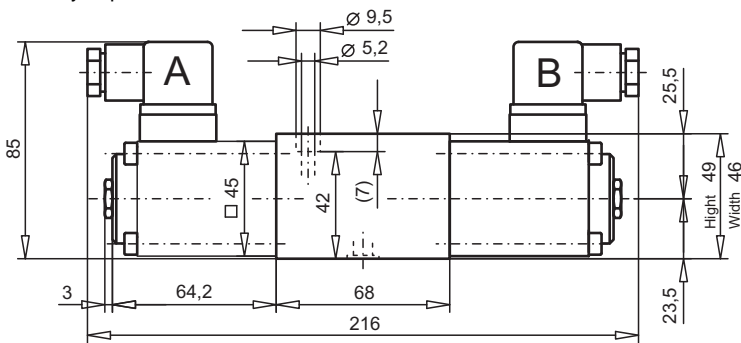
WDMFA06-CB3-G24-Z57

**SYMBOL**



**DIMENSIONS**

4/2-way impulse valve



Kenngrossen

siehe Datenblatt 1.2-55